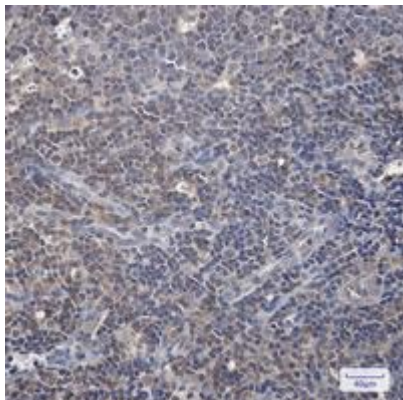
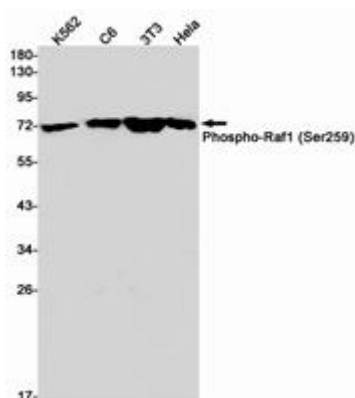


**PHOSPHO-RAF1 (SER259) RABBIT MAB****Cat.#:** N262806**Product Name:** Anti-Phospho-Raf1 (Ser259) Rabbit Monoclonal Antibody**Synonyms:** RAF1; RAF; RAF proto-oncogene serine/threonine-protein kinase; Proto-oncogene c-RAF; cRaf; Raf-1**UNIPROT ID:** P04049**Background:** Raf-1 is a MAP kinase kinase kinase (MAP3K) which functions downstream of the Ras family of membrane associated GTPases to which it binds directly. Once activated Raf-1 can phosphorylate to activate the dual specificity protein kinases MEK1 and MEK2 which in turn phosphorylate to activate the serine/threonine specific protein kinases ERK1 and ERK2.**Immunogen:** A synthetic phosphopeptide corresponding to residues surrounding Ser259 of human Raf1**Applications:** WB,IHC-P**Recommended Dilutions:** WB: 1/500-1/1000 IHC: 1/50-1/100**Host Species:** Rabbit**Clonality:** Rabbit Monoclonal**Clone ID:** R07-4J4**MW:** Calculated MW: 73 kDa; Observed MW: 73 kDa**Isotype:** IgG**Purification:** Affinity Purified**Species Reactivity:** Human,Mouse,Rat**Conjugation:** Unconjugated**Modification:** Phosphorylated**Constituents:** PBS (without Mg<sup>2+</sup> and Ca<sup>2+</sup>), pH 7.3 containing 50% glycerol, 0.5% BSA and 0.02% sodium azide**Research Areas:** Signal Transduction**Storage & Shipping:** Store at -20°C. Avoid repeated freezing and thawing



Immunohistochemistry analysis of paraffin-embedded Human tonsil using Raf1 (Phospho-Ser259) antibody. High-pressure and temperature Sodium Citrate pH 6.0 was used for antigen retrieval.



Western blot analysis of Phospho-Raf1 (Ser259) in K562, C6, 3T3, HeLa lysates using Phospho-Raf1 (Ser259) antibody.