

## PHOSPHO-RB (SER780) RABBIT MAB

**Cat.#:** N262820

**Product Name:** Anti-Phospho-Rb (Ser780) Rabbit Monoclonal Antibody

**Synonyms:** Rb1; Retinoblastoma-associated protein; p105-Rb; pRb; Rb; pp110

**UNIPROT ID:** P06400

**Background:** Cell cycle-dependent phosphorylation by a CDK inhibits Rb target binding and allows cell cycle progression. Rb inactivation and subsequent cell cycle progression likely requires an initial phosphorylation by cyclin D-CDK4/6 followed by cyclin E-CDK2 phosphorylation. Specificity of different CDK/cyclin complexes has been observed in vitro and cyclin D1 is required for Ser780 phosphorylation in vivo.

**Immunogen:** A synthetic phosphopeptide corresponding to residues surrounding Ser780 of human Rb

**Applications:** WB,IP

**Recommended Dilutions:** WB: 1/500-1/1000 IP: 1/20

**Host Species:** Rabbit

**Clonality:** Rabbit Monoclonal

**Clone ID:** R01-8H7

**MW:** Calculated MW: 106 kDa; Observed MW: 110 kDa

**Isotype:** IgG

**Purification:** Affinity Purified

**Species Reactivity:** Human,Rat

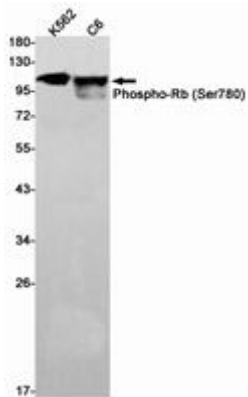
**Conjugation:** Unconjugated

**Modification:** Phosphorylated

**Constituents:** PBS (without Mg<sup>2+</sup> and Ca<sup>2+</sup>), pH 7.3 containing 50% glycerol, 0.5% BSA and 0.02% sodium azide

**Research Areas:** Cell Biology

**Storage & Shipping:** Store at -20°C. Avoid repeated freezing and thawing



Western blot analysis of Phospho-Rb (Ser780) in K562, C6 lysates using Phospho-Rb (Ser780) antibody.