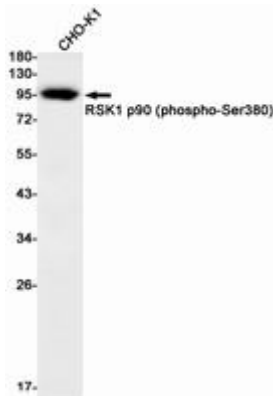


**PHOSPHO-RSK1 P90 (SER380) RABBIT MAB****Cat.#:** N263195**Product Name:** Anti-Phospho-RSK1 p90 (Ser380) Rabbit Monoclonal Antibody**Synonyms:** RPS6KA1; MAPKAPK1A; RSK1; Ribosomal protein S6 kinase alpha-1; S6K-alpha-1; 90 kDa ribosomal protein S6 kinase 1; p90-RSK 1; p90RSK1; p90S6K; MAP kinase-activated protein kinase 1a; MAPK-activated protein kinase 1a; MAPKAP kinase 1a; MAPKAP**UNIPROT ID:** Q15418**Background:** Rsk1 is a member of a family of 90kDa ribosomal protein S6 kinases, which includes Rsk1, Rsk2 and Rsk3. These are broadly expressed serine / threonine protein kinases activated in response to mitogenic stimuli, including extracellular signal regulated protein kinases Erk1 and Erk2. Rsk1 is activated by MAPK in vitro and in vivo via phosphorylation. Active Rsks appear to play a major role in transcriptional regulation by translocating to the nucleus and phosphorylating c-Fos and CREB.**Immunogen:** A synthetic phosphopeptide corresponding to residues surrounding Ser380 of human RSK1 p90**Applications:** WB,IP**Recommended Dilutions:** WB: 1/500-1/1000 IP: 1/20**Host Species:** Rabbit**Clonality:** Rabbit Monoclonal**Clone ID:** R05-7F3**MW:** Calculated MW: 83 kDa; Observed MW: 90 kDa**Isotype:** IgG**Purification:** Affinity Purified**Species Reactivity:** Hamster, Mouse**Conjugation:** Unconjugated**Modification:** Phosphorylated**Constituents:** PBS (without Mg<sup>2+</sup> and Ca<sup>2+</sup>), pH 7.3 containing 50% glycerol, 0.5% BSA and 0.02% sodium azide**Research Areas:** Signal Transduction**Storage & Shipping:** Store at -20°C. Avoid repeated freezing and thawing



Western blot analysis of RSK1 p90 (Phospho-Ser380) in CHO-K1 lysates using Phospho-RSK1 p90 (Ser380) antibody.