

PHOSPHO-RSK4 (SER232) RABBIT MAB

Cat.#: N261707

Product Name: Anti-Phospho-RSK4 (Ser232) Rabbit Monoclonal Antibody

Synonyms: RPS6KA6; RSK4; Ribosomal protein S6 kinase alpha-6; S6K-alpha-6; 90 kDa ribosomal protein S6 kinase 6; p90-RSK 6; p90RSK6; Ribosomal S6 kinase 4; RSK-4; pp90RSK4

UNIPROT ID: Q9UK32

Background: Serine/threonine kinase that may play a role in mediating the growth-factor and stress induced activation of the transcription factor CREB.

Immunogen: A synthetic phosphopeptide corresponding to residues surrounding Ser235 of human RSK4

Applications: WB, ICC/IF

Recommended Dilutions: WB: 1/500-1/1000 IF: 1/50-1/200

Host Species: Rabbit

Clonality: Rabbit Monoclonal

Clone ID: R04-8D6

MW: Calculated MW: 84 kDa; Observed MW: 84 kDa

Isotype: IgG

Purification: Affinity Purified

Species Reactivity: Human

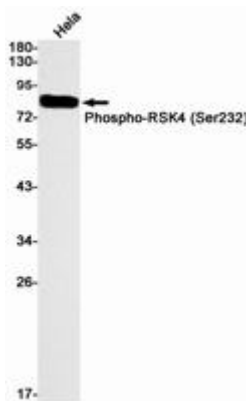
Conjugation: Unconjugated

Modification: Phosphorylated

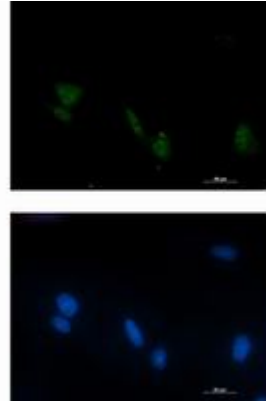
Constituents: PBS (without Mg²⁺ and Ca²⁺), pH 7.3 containing 50% glycerol, 0.5% BSA and 0.02% sodium azide

Research Areas: Signal Transduction

Storage & Shipping: Store at -20°C. Avoid repeated freezing and thawing



Western blot analysis of Phospho-RSK4 (Ser232) in HeLa lysates using Phospho-RSK4 (Ser232) antibody.



Immunocytochemistry analysis of Phospho-RSK4 (Ser232) (green) in LNCap using Phospho-RSK4 (Ser232) antibody, and DAPI (blue).