

PHOSPHO-SMAD1 (SER463/SER465) RABBIT MAB

Cat.#: N263196

Product Name: Anti-Phospho-Smad1 (Ser463/Ser465) Rabbit Monoclonal Antibody

Synonyms: SMAD1; BSPI; MADH1; MADR1; Mothers against decapentaplegic homolog 1; MAD homolog 1; Mothers against DPP homolog 1; JV4-1; Mad-related protein 1; SMAD family member 1; SMAD 1; Smad1; hSMAD1; Transforming growth factor-beta-signaling protein

UNIPROT ID: Q15797

Background: Transcriptional modulator activated by BMP (bone morphogenetic proteins) type I receptor kinase. SMAD1 is a receptor-regulated SMAD (R-SMAD). SMAD1/OAZ1/PSMB4 complex mediates the degradation of the CREBBP/EP300 repressor SNIPI. May act synergistically with SMAD4 and YY1 in bone morphogenetic protein (BMP)-mediated cardiac-specific gene expression.

Immunogen: A synthetic phosphopeptide corresponding to residues surrounding Ser463/Ser465 of human Smad1

Applications: WB,IP

Recommended Dilutions: WB: 1/500-1/1000 IP: 1/20

Host Species: Rabbit

Clonality: Rabbit Monoclonal

Clone ID: R07-4A3

MW: Calculated MW: 52 kDa; Observed MW: 52 kDa

Isotype: IgG

Purification: Affinity Purified

Species Reactivity: Human,Rat

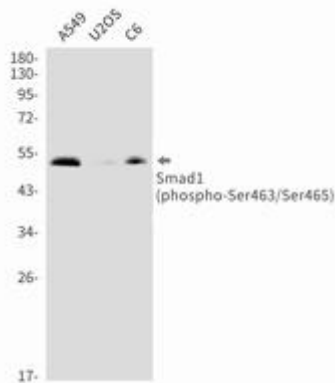
Conjugation: Unconjugated

Modification: Phosphorylated

Constituents: PBS (without Mg²⁺ and Ca²⁺), pH 7.3 containing 50% glycerol, 0.5% BSA and 0.02% sodium azide

Research Areas: Signal Transduction

Storage & Shipping: Store at -20°C. Avoid repeated freezing and thawing



Western blot analysis of Phospho-Smad1 (Ser463/Ser465) in A549, U2OS, C6 lysates using Phospho-Smad1 (Ser463/Ser465) antibody.