

## PHOSPHO-SRC (TYR419) RABBIT PAB

**Cat.#:** N225623

**Product Name:** Anti-Phospho-Src (Tyr419) Rabbit pAb

**Synonyms:** SRC; SRC1; Proto-oncogene tyrosine-protein kinase Src; Proto-oncogene c-Src; pp60c-src; p60-Src

**UNIPROT ID:** P12931

**Background:** Src activity is regulated by tyrosine phosphorylation at two sites, but with opposing effects. While phosphorylation at Tyr416 in the activation loop of the kinase domain upregulates enzyme activity, phosphorylation at Tyr527 in the carboxy-terminal tail by Csk renders the enzyme less active (2).

**Immunogen:** A synthesized peptide derived from human Phospho-Src (Y419)

**Applications:** WB,FC

**Recommended Dilutions:** WB: 1/500-1/1000 FC: 1/50-1/100

**Host Species:** Rabbit

**Clonality:** Rabbit Polyclonal

**Clone ID:** -

**MW:** Calculated MW: 60 kDa; Observed MW: 60 kDa

**Isotype:** IgG

**Purification:** Affinity Chromatography

**Species Reactivity:** Human,Mouse,Rat

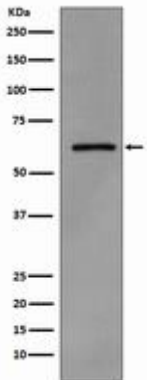
**Conjugation:** Unconjugated

**Modification:** Phosphorylated

**Constituents:** PBS (without Mg<sup>2+</sup> and Ca<sup>2+</sup>), pH 7.3 containing 50% glycerol, 0.5% BSA and 0.02% sodium azide

**Research Areas:** Signal Transduction

**Storage & Shipping:** Store at -20°C. Avoid repeated freezing and thawing



Western blot analysis of Phospho-Src (Y419) in A431 lysates treated with pervanadate using Phospho-Src (Tyr419) antibody.