

## PHOSPHO-STAT1 (SER727) RABBIT MAB

**Cat.#:** N262937

**Product Name:** Anti-Phospho-STAT1 (Ser727) Rabbit Monoclonal Antibody

**Synonyms:** STAT1; Signal transducer and activator of transcription 1-  
alpha/beta; Transcription factor ISGF-3 components p91/p84

**UNIPROT ID:** P42224

**Background:** The protein encoded by this gene is a member of the STAT protein family. In response to cytokines and growth factors, STAT family members are phosphorylated by the receptor associated kinases, and then form homo- or heterodimers that translocate to the cell nucleus where they act as transcription activators.

**Immunogen:** A synthetic phosphopeptide corresponding to residues surrounding Ser727 of human STAT1

**Applications:** WB,IHC-P

**Recommended Dilutions:** WB: 1/500-1/1000 IHC: 1/50-1/100

**Host Species:** Rabbit

**Clonality:** Rabbit Monoclonal

**Clone ID:** R09-2G9

**MW:** Calculated MW: 87 kDa; Observed MW: 87 kDa

**Isotype:** IgG

**Purification:** Affinity Purified

**Species Reactivity:** Human,Mouse,Rat

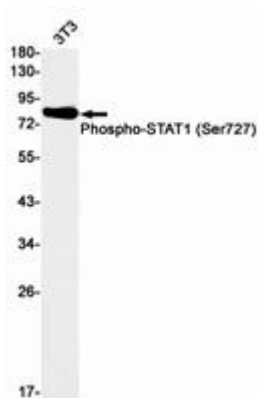
**Conjugation:** Unconjugated

**Modification:** Phosphorylated

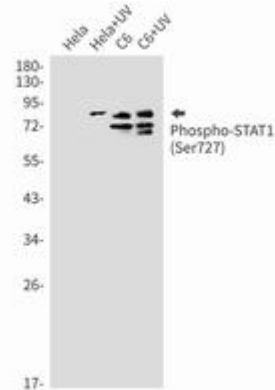
**Constituents:** PBS (without Mg<sup>2+</sup> and Ca<sup>2+</sup>), pH 7.3 containing 50% glycerol, 0.5% BSA and 0.02% sodium azide

**Research Areas:** Signal Transduction

**Storage & Shipping:** Store at -20°C. Avoid repeated freezing and thawing



Western blot analysis of Phospho-STAT1 (Ser727) in 3T3 lysates using Phospho-STAT1 (Ser727) antibody.



Western blot analysis of Phospho-STAT1 (Ser727) in Hela, Hela+UV, C6, C6+UV lysates using Phospho-STAT1 (Ser727) antibody.