

## PHOSPHO-STAT3 (SER727) RABBIT MAB

**Cat.#:** N262940

**Product Name:** Anti-Phospho-STAT3 (Ser727) Rabbit Monoclonal Antibody

**Synonyms:** STAT3; APRF; Signal transducer and activator of transcription 3; Acute-phase response factor

**UNIPROT ID:** P40763

**Background:** The protein encoded by this gene is a member of the STAT protein family. In response to cytokines and growth factors, STAT family members are phosphorylated by the receptor associated kinases, and then form homo- or heterodimers that translocate to the cell nucleus where they act as transcription activators.

**Immunogen:** A synthetic phosphopeptide corresponding to residues surrounding Ser727 of human STAT3

**Applications:** WB, ICC/IF

**Recommended Dilutions:** WB: 1/500-1/1000 IF: 1/50-1/200

**Host Species:** Rabbit

**Clonality:** Rabbit Monoclonal

**Clone ID:** R05-7B2

**MW:** Calculated MW: 88 kDa; Observed MW: 88 kDa

**Isotype:** IgG

**Purification:** Affinity Purified

**Species Reactivity:** Human, Rat

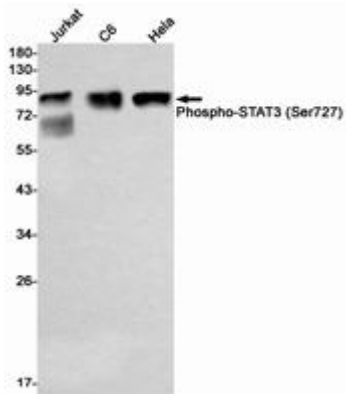
**Conjugation:** Unconjugated

**Modification:** Phosphorylated

**Constituents:** PBS (without Mg<sup>2+</sup> and Ca<sup>2+</sup>), pH 7.3 containing 50% glycerol, 0.5% BSA and 0.02% sodium azide

**Research Areas:** Hypoxia Signal Transduction Hypoxia-induced

**Storage & Shipping:** Store at -20°C. Avoid repeated freezing and thawing



Western blot analysis of Phospho-STAT3 (Ser727) in Jurkat, C6, HeLa lysates using Phospho-STAT3 (Ser727) antibody.