

PHOSPHO-STAT3 (SER727) RABBIT PAB

Cat.#: N225593

Product Name: Anti-Phospho-STAT3 (Ser727) Rabbit pAb

Synonyms: STAT3; APRF; Signal transducer and activator of transcription 3; Acute-phase response factor

UNIPROT ID: P40763

Background: The protein encoded by this gene is a member of the STAT protein family. In response to cytokines and growth factors, STAT family members are phosphorylated by the receptor associated kinases, and then form homo- or heterodimers that translocate to the cell nucleus where they act as transcription activators.

Immunogen: A synthesized peptide derived from human Phospho-STAT3 (S727)

Applications: WB,IHC-P,ICC/IF

Recommended Dilutions: WB: 1/500-1/1000 IHC: 1/50-1/100 IF: 1/50-1/200

Host Species: Rabbit

Clonality: Rabbit Polyclonal

Clone ID: -

MW: Calculated MW: 88 kDa; Observed MW: 98 kDa

Isotype: IgG

Purification: Affinity Chromatography

Species Reactivity: Human,Rat

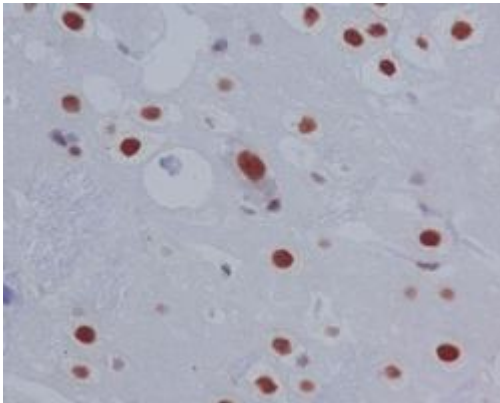
Conjugation: Unconjugated

Modification: Phosphorylated

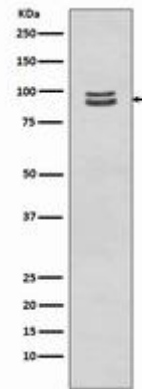
Constituents: PBS (without Mg²⁺ and Ca²⁺), pH 7.3 containing 50% glycerol, 0.5% BSA and 0.02% sodium azide

Research Areas: Signal Transduction

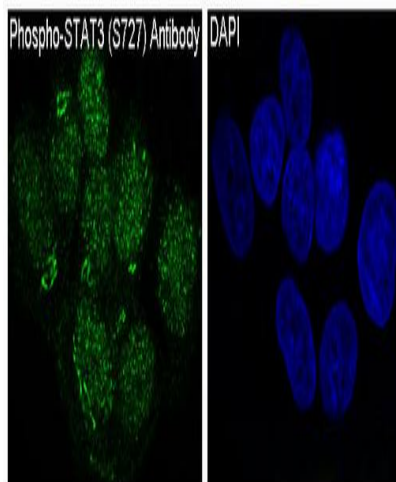
Storage & Shipping: Store at -20°C. Avoid repeated freezing and thawing



Immunohistochemistry analysis of paraffin-embedded rat brain using Phospho-STAT3 (S727) antibody. High-pressure and temperature Sodium Citrate pH 6.0 was used for antigen retrieval.



Western blot analysis of Phospho-STAT3 (S727) in A431 lysates treated with EGF using Phospho-STAT3 (Ser727) antibody.



Immunofluorescence analysis of Phospho-STAT3 (Ser727) in A431 treated with EGF using Phospho-STAT3 (S727) antibody.