

PHOSPHO-STAT3 (SER727) RABBIT PAB

Cat.#: N225389

Product Name: Anti-Phospho-STAT3 (Ser727) Rabbit pAb

Synonyms: STAT3; APRF; Signal transducer and activator of transcription 3; Acute-phase response factor

UNIPROT ID: P40763

Background: The protein encoded by this gene is a member of the STAT protein family. In response to cytokines and growth factors, STAT family members are phosphorylated by the receptor associated kinases, and then form homo- or heterodimers that translocate to the cell nucleus where they act as transcription activators.

Immunogen: The antiserum was produced against synthesized peptide derived from human STAT3 around the phosphorylation site of Ser727. AA range:694-743

Applications: ICC/IF,WB,IHC-F,IHC-P,IP,ELISA

Recommended Dilutions: WB: 1/500-1/1000 IHC: 1/50-1/100 IF: 1/50-1/200 IP: 1/20 ELISA: 1/10000

Host Species: Rabbit

Clonality: Rabbit Polyclonal

Clone ID: -

MW: Calculated MW: 88 kDa; Observed MW: 85 kDa

Isotype: IgG

Purification: Affinity Purified

Species Reactivity: Human,Mouse,Rat,Monkey

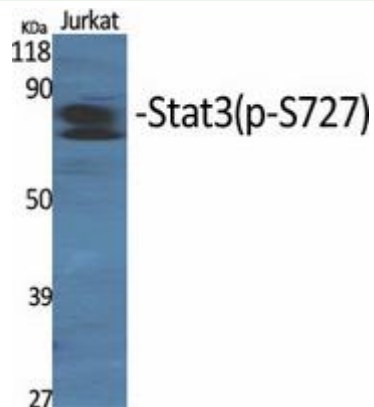
Conjugation: Unconjugated

Modification: Phosphorylated

Constituents: PBS (without Mg²⁺ and Ca²⁺), pH 7.3 containing 50% glycerol, 0.5% BSA and 0.02% sodium azide

Research Areas: Signal Transduction

Storage & Shipping: Store at -20°C. Avoid repeated freezing and thawing



Western blot analysis of Phospho-STAT3 (Ser727) in various lysates using Phospho-STAT3 (Ser727) antibody.