

## PHOSPHO-STAT6 (TYR641) RABBIT PAB

**Cat.#:** N225289

**Product Name:** Anti-Phospho-STAT6 (Tyr641) Rabbit pAb

**Synonyms:** STAT6; Signal transducer and activator of transcription 6; IL-4 Stat

**UNIPROT ID:** P42226

**Background:** STAT6 transcription factor of the STAT family. Plays a central role in IL4-mediated biological responses. Induces the expression of BCL2L1/BCL-X(L), which is responsible for the anti-apoptotic activity of IL4.

**Immunogen:** Synthetic peptide of human STAT6

**Applications:** WB,IHC-P

**Recommended Dilutions:** WB: 1/500-1/1000 IHC: 1/50-1/100

**Host Species:** Rabbit

**Clonality:** Rabbit Polyclonal

**Clone ID:** -

**MW:** Calculated MW: 94 kDa; Observed MW: 110 kDa

**Isotype:** IgG

**Purification:** Affinity Purified

**Species Reactivity:** Human,Mouse,Rat

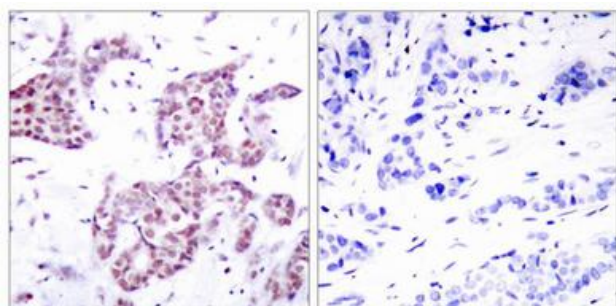
**Conjugation:** Unconjugated

**Modification:** Phosphorylated

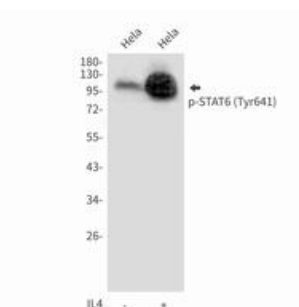
**Constituents:** PBS (without Mg<sup>2+</sup> and Ca<sup>2+</sup>), pH 7.3 containing 50% glycerol, 0.5% BSA and 0.02% sodium azide

**Research Areas:** Signal Transduction

**Storage & Shipping:** Store at -20°C. Avoid repeated freezing and thawing



Immunohistochemistry analysis of paraffin-embedded Human breast carcinoma tissue using STAT6(Phospho-Tyr641) antibody. High-pressure and temperature Sodium Citrate pH 6.0 was used for antigen retrieval. Sample with blocking peptide on the right.



Western blot analysis of Phospho-STAT6 (Tyr641) in HeLa lysates using Phospho-STAT6 (Tyr641) antibody.