

PHOSPHO-SYNAPSIN I (SER9) RABBIT PAB

Cat.#: N225683

Product Name: Anti-Phospho-Synapsin I (Ser9) Rabbit pAb

Synonyms: SYN1; Synapsin-1; Brain protein 4.1; Synapsin I

UNIPROT ID: P17600

Background: This gene is a member of the synapsin gene family. Synapsins encode neuronal phosphoproteins which associate with the cytoplasmic surface of synaptic vesicles. Family members are characterized by common protein domains, and they are implicated in synaptogenesis and the modulation of neurotransmitter release, suggesting a potential role in several neuropsychiatric diseases.

Immunogen: A synthesized peptide derived from human Phospho-Synapsin I (S9)

Applications: WB,IHC-P

Recommended Dilutions: WB: 1/500-1/1000 IHC: 1/50-1/100

Host Species: Rabbit

Clonality: Rabbit Polyclonal

Clone ID: -

MW: Calculated MW: 74 kDa; Observed MW: 77 kDa

Isotype: IgG

Purification: Affinity Chromatography

Species Reactivity: Human,Mouse,Rat

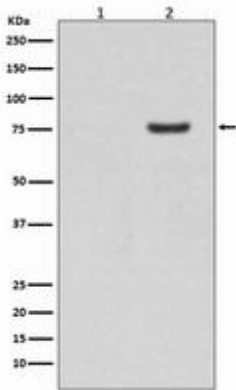
Conjugation: Unconjugated

Modification: Phosphorylated

Constituents: PBS (without Mg²⁺ and Ca²⁺), pH 7.3 containing 50% glycerol, 0.5% BSA and 0.02% sodium azide

Research Areas: Neuroscience

Storage & Shipping: Store at -20°C. Avoid repeated freezing and thawing



Western blot analysis of Phospho-Synapsin I (S9) in (1) Human brain lysates; (2) Human brain lysates treated with AP using Phospho-Synapsin I (Ser9) antibody.