

## PHOSPHO-TAU (SER198) RABBIT MAB

**Cat.#:** N261742

**Product Name:** Anti-Phospho-Tau (Ser198) Rabbit Monoclonal Antibody

**Synonyms:** MAPT; MAPTL; MTBT1; TAU; Microtubule-associated protein tau; Neurofibrillary tangle protein; Paired helical filament-tau; PHF-tau

**UNIPROT ID:** P10636

**Background:** This gene encodes the microtubule-associated protein tau (MAPT) whose transcript undergoes complex, regulated alternative splicing, giving rise to several mRNA species. MAPT transcripts are differentially expressed in the nervous system, depending on stage of neuronal maturation and neuron type.

**Immunogen:** A synthetic phosphopeptide corresponding to residues surrounding Ser198 of human Tau

**Applications:** WB,IP

**Recommended Dilutions:** WB: 1/500-1/1000 IP: 1/20

**Host Species:** Rabbit

**Clonality:** Rabbit Monoclonal

**Clone ID:** R03-7A2

**MW:** Calculated MW: 79 kDa; Observed MW: 50-80 kDa

**Isotype:** IgG

**Purification:** Affinity Purified

**Species Reactivity:** Human

**Conjugation:** Unconjugated

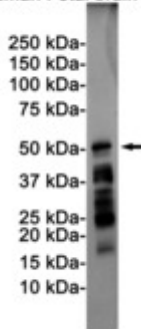
**Modification:** Phosphorylated

**Constituents:** PBS (without Mg<sup>2+</sup> and Ca<sup>2+</sup>), pH 7.3 containing 50% glycerol, 0.5% BSA and 0.02% sodium azide

**Research Areas:** Neuroscience

**Storage & Shipping:** Store at -20°C. Avoid repeated freezing and thawing

Human Fetal brain



Western blot analysis of Tau (Phospho-Ser198) in Human Fetal brain lysates using Phospho-Tau (Ser198) antibody.