

PHOSPHO-TAU (SER202/THR205) RABBIT MAB

Cat.#: N261754

Product Name: Anti-Phospho-Tau (Ser202/Thr205) Rabbit Monoclonal Antibody

Synonyms: MAPT; MAPTL; MTBT1; TAU; Microtubule-associated protein tau; Neurofibrillary tangle protein; Paired helical filament-tau; PHF-tau

UNIPROT ID: P10636

Background: This gene encodes the microtubule-associated protein tau (MAPT) whose transcript undergoes complex, regulated alternative splicing, giving rise to several mRNA species. MAPT transcripts are differentially expressed in the nervous system, depending on stage of neuronal maturation and neuron type.

Immunogen: A synthetic phosphopeptide corresponding to residues surrounding Ser202/Thr205 of human Tau

Applications: WB,IP

Recommended Dilutions: WB: 1/500-1/1000 IP: 1/20

Host Species: Rabbit

Clonality: Rabbit Monoclonal

Clone ID: R09-3G2

MW: Calculated MW: 79 kDa; Observed MW: 50-80 kDa

Isotype: IgG

Purification: Affinity Purified

Species Reactivity: Human

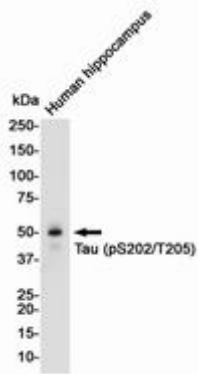
Conjugation: Unconjugated

Modification: Phosphorylated

Constituents: PBS (without Mg²⁺ and Ca²⁺), pH 7.3 containing 50% glycerol, 0.5% BSA and 0.02% sodium azide

Research Areas: Neuroscience

Storage & Shipping: Store at -20°C. Avoid repeated freezing and thawing



Western blot analysis of Tau (Phospho-Ser202/Thr205) in Human Fetal brain lysates using Phospho-Tau (Ser202/Thr205) antibody.