

## PHOSPHO-TGF BETA RECEPTOR I (SER165) RABBIT PAB

**Cat.#:** N225332

**Product Name:** Anti-Phospho-TGF beta Receptor I (Ser165) Rabbit pAb

**Synonyms:** TGFBR1; ALK5; SKR4; TGF-beta receptor type-1; TGFR-1; Activin A receptor type II-like protein kinase of 53kD; Activin receptor-like kinase 5; ALK-5; ALK5; Serine/threonine-protein kinase receptor R4; SKR4; TGF-beta type I receptor; Transfor

**UNIPROT ID:** P36897

**Background:** The protein encoded by this gene forms a heteromeric complex with type II TGF-beta receptors when bound to TGF-beta, transducing the TGF-beta signal from the cell surface to the cytoplasm. The encoded protein is a serine/threonine protein kinase.

**Immunogen:** Synthetic peptide of human TGFBR1

**Applications:** WB,IHC-P,ICC/IF,ELISA

**Recommended Dilutions:** WB: 1/500-1/1000 IHC: 1/50-1/100 ICC: 1/100-1/200 ELISA: 1/10000

**Host Species:** Rabbit

**Clonality:** Rabbit Polyclonal

**Clone ID:** -

**MW:** Calculated MW: 56 kDa; Observed MW: 56 kDa

**Isotype:** IgG

**Purification:** Affinity Purified

**Species Reactivity:** Human,Mouse,Rat

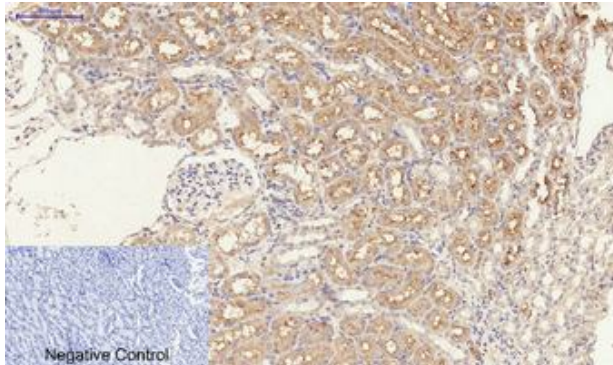
**Conjugation:** Unconjugated

**Modification:** Phosphorylated

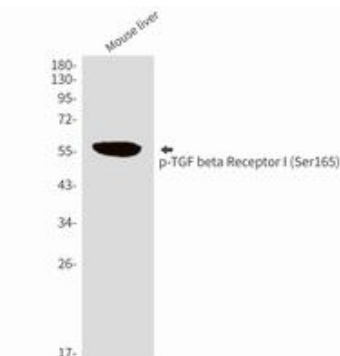
**Constituents:** PBS (without Mg<sup>2+</sup> and Ca<sup>2+</sup>), pH 7.3 containing 50% glycerol, 0.5% BSA and 0.02% sodium azide

**Research Areas:** Cardiovascular

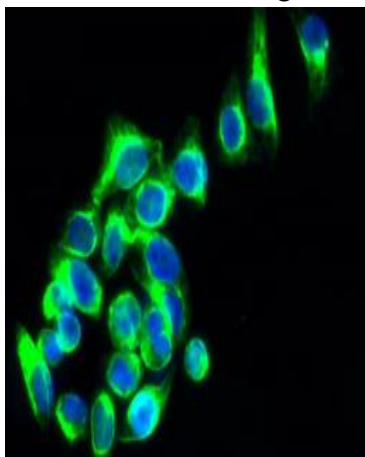
**Storage & Shipping:** Store at -20°C. Avoid repeated freezing and thawing



Immunohistochemistry analysis of paraffin-embedded rat kidney tissue using Phospho-TGF beta Receptor I (Ser165) antibody. High-pressure and temperature Sodium Citrate pH 6.0 was used for antigen retrieval.



Western blot analysis of Phospho-TGF beta Receptor I (Ser165) in mouse liver lysates using Phospho-TGF beta Receptor I (Ser165) antibody.



Immunofluorescence analysis of Phospho-TGF beta Receptor I (Ser165) in HepG2 cells using Phospho-TGF beta Receptor I (Ser165) antibody (green).