

PHOSPHO-VEGF RECEPTOR 2 (TYR1175) RABBIT PAB

Cat.#: N225292

Product Name: Anti-Phospho-VEGF Receptor 2 (Tyr1175) Rabbit pAb

Synonyms: KDR; FLK1; VEGFR2; Vascular endothelial growth factor receptor 2; VEGFR-2; Fetal liver kinase 1; FLK-1; Kinase insert domain receptor; KDR; Protein-tyrosine kinase receptor flk-1; CD antigen CD309

UNIPROT ID: P35968

Background: VEGFR-2 is a receptor tyrosine kinase of the VEGFR family. High affinity receptor for VEGF and VEGF-C. Ligand binding induces autophosphorylation and activation. Activated receptor recruits proteins including Shc, GRB2, PI3K, Nck, SHP-1 and SHP-2.

Immunogen: Synthetic peptide of human KDR

Applications: IHC-P, ICC/IF

Recommended Dilutions: IHC: 1/50-1/100 ICC: 1/100-1/200

Host Species: Rabbit

Clonality: Rabbit Polyclonal

Clone ID: -

MW: -

Isotype: IgG

Purification: Affinity Purified

Species Reactivity: Human, Mouse, Rat

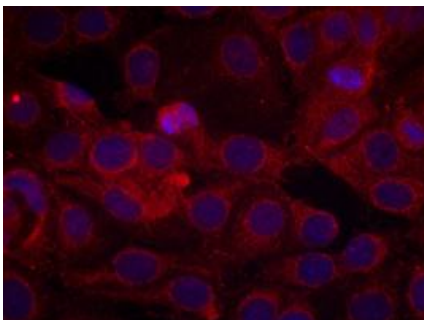
Conjugation: Unconjugated

Modification: Phosphorylated

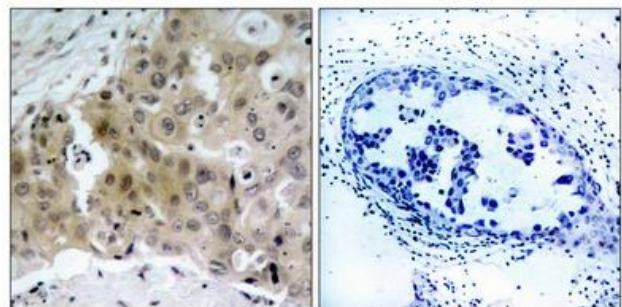
Constituents: PBS (without Mg²⁺ and Ca²⁺), pH 7.3 containing 50% glycerol, 0.5% BSA and 0.02% sodium azide

Research Areas: Epigenetics and Nuclear Signaling

Storage & Shipping: Store at -20°C. Avoid repeated freezing and thawing



Immunofluorescence analysis of Phospho-VEGF Receptor 2 (Tyr1175) in MCF-7 cells using Phospho-VEGF Receptor 2 (Tyr1175) antibody, and DAPI (blue).



Immunohistochemistry analysis of paraffin-embedded Human breast carcinoma tissue using Phospho-VEGF Receptor 2 (Tyr1175) antibody. High-pressure and temperature Sodium Citrate pH 6.0 was used for antigen retrieval. Sample with blocking peptide on the right.



Product Description

Pioneering GTPase and Oncogene Product Development since 2010
