

## PHOSPHO-VIMENTIN (SER56) RABBIT MAB

**Cat.#:** N263070

**Product Name:** Anti-Phospho-Vimentin (Ser56) Rabbit Monoclonal Antibody

**Synonyms:** VIM; Vimentin

**UNIPROT ID:** P08670

**Background:** Vimentin an intermediate filament protein. Intermediate filament proteins are expressed in a tissue-specific manner. Desmin is the subunit specific for muscle and vimentin the subunit specific for mesenchymal tissue.

**Immunogen:** A synthetic phosphopeptide corresponding to residues surrounding Ser56 of human Vimentin

**Applications:** WB, ICC/IF, IP

**Recommended Dilutions:** WB: 1/500-1/1000 IF: 1/50-1/200 IP: 1/20

**Host Species:** Rabbit

**Clonality:** Rabbit Monoclonal

**Clone ID:** R01-0E2

**MW:** Calculated MW: 54 kDa; Observed MW: 54 kDa

**Isotype:** IgG

**Purification:** Affinity Purified

**Species Reactivity:** Human

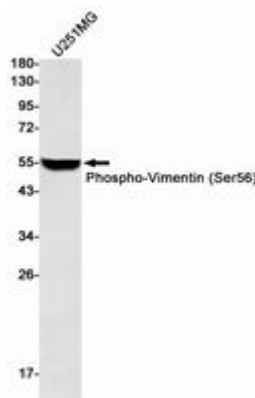
**Conjugation:** Unconjugated

**Modification:** Phosphorylated

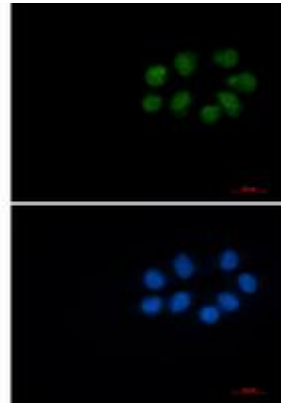
**Constituents:** PBS (without Mg<sup>2+</sup> and Ca<sup>2+</sup>), pH 7.3 containing 50% glycerol, 0.5% BSA and 0.02% sodium azide

**Research Areas:** Neuroscience

**Storage & Shipping:** Store at -20°C. Avoid repeated freezing and thawing



Western blot analysis of Phospho-Vimentin (Ser56) in U251MG lysates using Phospho-Vimentin (Ser56) antibody.



Immunocytochemistry analysis of Phospho-Vimentin (Ser56) (green) in HeLa using Phospho-Vimentin (Ser56) antibody, and DAPI (blue).