

## PHOSPHOLIPASE A2 ACTIVATOR PROTEIN RABBIT MAB

**Cat.#:** N262713

**Product Name:** Anti-Phospholipase A2 Activator Protein Rabbit Monoclonal Antibody

**Synonyms:** Glycerophosphatase; PLA2P; Plaa; PLAP

**UNIPROT ID:** Q9Y263

**Background:** Involved in the maintenance of ubiquitin levels.

**Immunogen:** A synthetic peptide of human Anti-Phospholipase A2 activator protein (PLAP)

**Applications:** WB,ICC/IF

**Recommended Dilutions:** WB: 1/500-1/1000 IF: 1/50-1/200

**Host Species:** Rabbit

**Clonality:** Rabbit Monoclonal

**Clone ID:** R06-1D7

**MW:** Calculated MW: 87 kDa; Observed MW: 87 kDa

**Isotype:** IgG

**Purification:** Affinity Purified

**Species Reactivity:** Human,Mouse

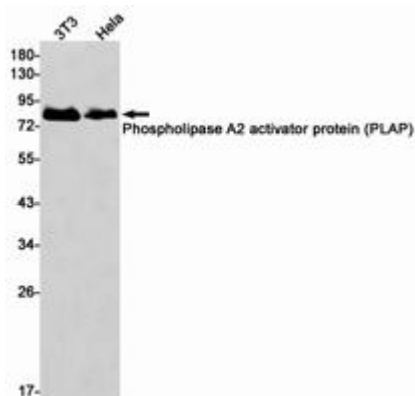
**Conjugation:** Unconjugated

**Modification:** Unmodified

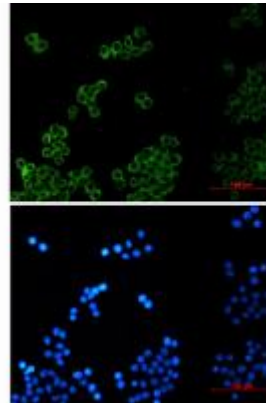
**Constituents:** PBS (without Mg<sup>2+</sup> and Ca<sup>2+</sup>), pH 7.3 containing 50% glycerol, 0.5% BSA and 0.02% sodium azide

**Research Areas:** Immunology

**Storage & Shipping:** Store at -20°C. Avoid repeated freezing and thawing



Western blot analysis of Phospholipase A2 activator protein (PLAP) in 3T3, HeLa lysates using Phospholipase A2 activator protein (PLAP) antibody.



Immunocytochemistry analysis of Phospholipase A2 Activator Protein (green) in HeLa using Phospholipase A2 Activator Protein antibody, and DAPI (blue).