

PHOSPHOLIPASE C GAMMA 1 RABBIT MAB

Cat.#: N263492

Product Name: Anti-Phospholipase C gamma 1 Rabbit Monoclonal Antibody

Synonyms: PLCG1; PLC1; 1-phosphatidylinositol 4; 5-bisphosphate phosphodiesterase gamma-1; PLC-148; Phosphoinositide phospholipase C-gamma-1; Phospholipase C-II; PLC-II; Phospholipase C-gamma-1; PLC-gamma-1

UNIPROT ID: P19174

Background: The protein encoded by this gene catalyzes the formation of inositol 1,4,5-trisphosphate and diacylglycerol from phosphatidylinositol 4,5-bisphosphate. This reaction uses calcium as a cofactor and plays an important role in the intracellular transduction of receptor-mediated tyrosine kinase activators. For example, when activated by SRC, the encoded protein causes the Ras guanine nucleotide exchange factor RasGRP1 to translocate to the Golgi, where it activates Ras.

Immunogen: A synthetic peptide of human Phospholipase C gamma 1/PLC-gamma-1

Applications: WB,ICC/IF,IP

Recommended Dilutions: WB: 1/500-1/1000 IF: 1/50-1/200 IP: 1/20

Host Species: Rabbit

Clonality: Rabbit Monoclonal

Clone ID: R01-6B4

MW: Calculated MW: 149 kDa; Observed MW: 149 kDa

Isotype: IgG

Purification: Affinity Purified

Species Reactivity: Human,Rat

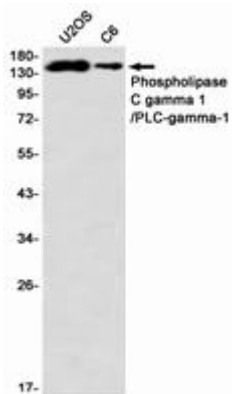
Conjugation: Unconjugated

Modification: Unmodified

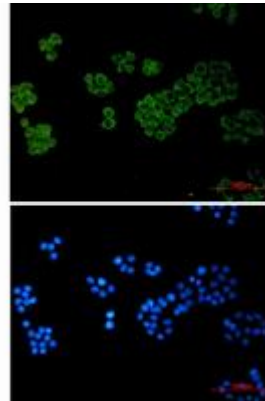
Constituents: PBS (without Mg²⁺ and Ca²⁺), pH 7.3 containing 50% glycerol, 0.5% BSA and 0.02% sodium azide

Research Areas: Cardiovascular

Storage & Shipping: Store at -20°C. Avoid repeated freezing and thawing



Western blot analysis of Phospholipase C gamma 1/PLCgamma1 in U2OS, C6 lysates using Phospholipase C gamma 1/PLCgamma1 antibody.



Immunocytochemistry analysis of Phospholipase C gamma 1 (green) in HeLa using Phospholipase C gamma 1 antibody, and DAPI (blue).