

PHTF1 RABBIT PAB

Cat.#: S218901

Product Name: Anti-PHTF1 Rabbit Polyclonal Antibody

Synonyms: PHTF

UNIPROT ID: Q9UMS5 (Gene Accession - BC002447)

Background: PHTF1 (putative homeodomain transcription factor 1), also known as PHTF, is a potential transcription regulator. It is a ubiquitously expressed integral, multipass membrane protein with predominant expression in testis. PHTF1 is associated with the ER (endoplasmic reticulum) and contains one bHLH (basic helix-loop-helix) domain. It is present in the cell during meiosis and spermiogenesis but, by the end of spermiogenesis, is released from the mature cell within the residual bodies. This implies that PHTF1 may play a role in the spermatozoa maturation process. In addition, PHTF1 is believed to interact with FEM1B and may be responsible for recruiting FEM1B to the surface of the ER membrane. This suggests that PHTF1 acts as a sequestering or anchoring protein for FEM1B. Two PHTF1 isoforms exist due to alternate splicing events. Isoform 2 is the shorter form and lacks the amino acid residues 648 to 762.

Immunogen: Fusion protein of human PHTF1

Applications: ELISA, IHC

Recommended Dilutions: IHC: 20-100; ELISA: 5000-10000

Host Species: Rabbit

Clonality: Rabbit Polyclonal

Isotype: Immunogen-specific rabbit IgG

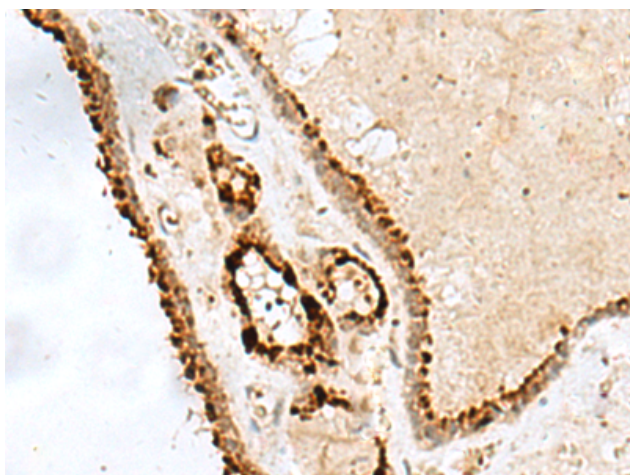
Purification: Antigen affinity purification

Species Reactivity: Human, Mouse

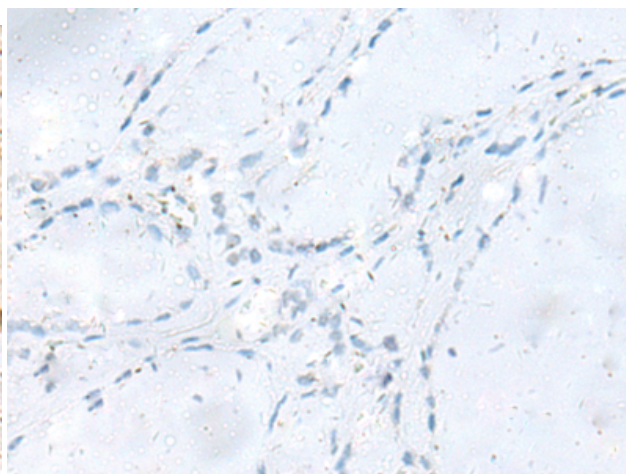
Constituents: PBS (without Mg²⁺ and Ca²⁺), pH 7.4, 150 mM NaCl, 0.05% Sodium Azide and 40% glycerol

Research Areas: Epigenetics and Nuclear Signaling

Storage & Shipping: Store at -20°C. Avoid repeated freezing and thawing



Immunohistochemistry analysis of paraffin embedded Human thyroid cancer tissue using 218901(PHTF1 Antibody) at a dilution of 1/40(Nucleus).



In comparison with the IHC on the left, the same paraffin-embedded Human thyroid cancer tissue is first treated with the fusion protein and then with 218901(Anti-PHTF1 Antibody) at dilution 1/40.



Product Description

Pioneering GTPase and Oncogene Product Development since 2010
