

## PHTF2 RABBIT PAB

**Cat.#:** S218089

**Product Name:** Anti-PHTF2 Rabbit Polyclonal Antibody

**Synonyms:**

**UNIPROT ID:** Q8N3S3 (Gene Accession - BC032334 )

**Background:** PHTF2 (putative homeodomain transcription factor 2) is a 785 amino acid protein that contains one basic helix-loop-helix (bHLH) domain and belongs to the PHTF family. Homologous to PHTF1, PHTF2 exhibits strongest similarity within putative homeodomains and both N- and C-terminal regions. Existing as four alternatively spliced isoforms, PHTF2 localizes to nucleus and participates in DNA binding. PHTF2 may also play a role in transcriptional regulation. While PHTF1 is expressed mainly in testis, PHTF2 is predominantly expressed in muscle, which suggests that both may have acquired different functions after their duplication and divergence. The gene that encodes PHTF2 maps to human chromosome 7q11.23.

**Immunogen:** Fusion protein of human PHTF2

**Applications:** ELISA, IHC

**Recommended Dilutions:** IHC: 20-100; ELISA: 2000-5000

**Host Species:** Rabbit

**Clonality:** Rabbit Polyclonal

**Isotype:** Immunogen-specific rabbit IgG

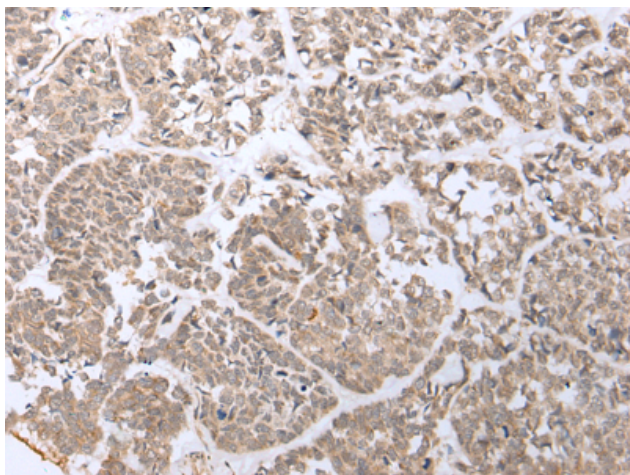
**Purification:** Antigen affinity purification

**Species Reactivity:** Human, Mouse

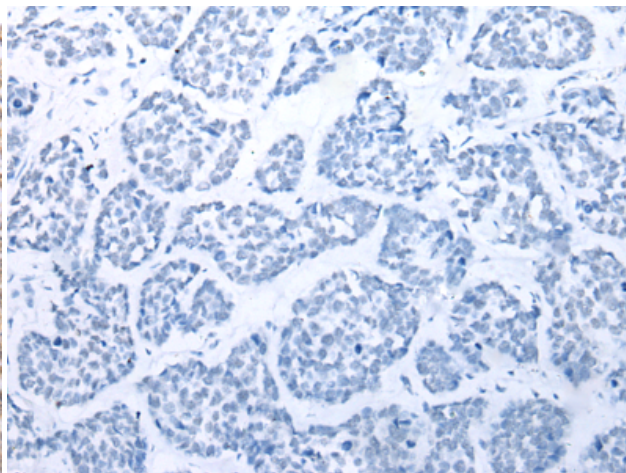
**Constituents:** PBS (without Mg<sup>2+</sup> and Ca<sup>2+</sup>), pH 7.4, 150 mM NaCl, 0.05% Sodium Azide and 40% glycerol

**Research Areas:** Epigenetics and Nuclear Signaling

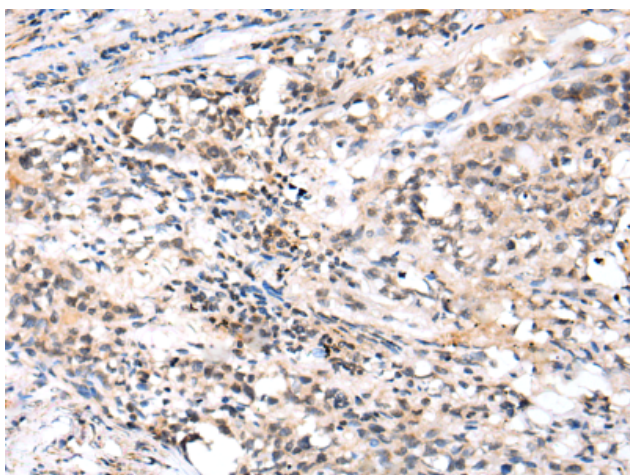
**Storage & Shipping:** Store at -20°C. Avoid repeated freezing and thawing



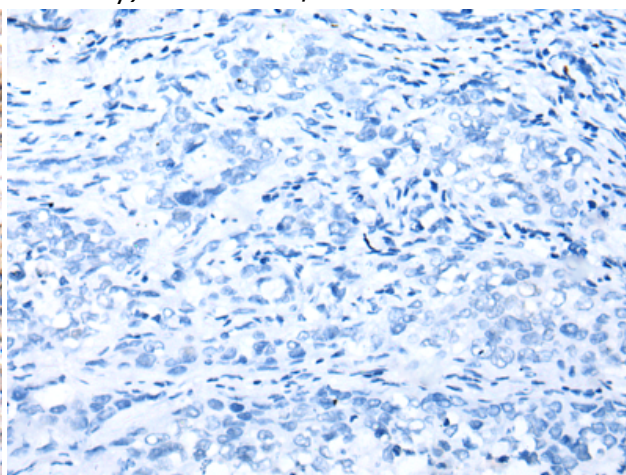
Immunohistochemistry analysis of paraffin embedded Human esophagus cancer tissue using 218089(PHTF2 Antibody) at a dilution of 1/20(Nucleus).



In comparison with the IHC on the left, the same paraffin-embedded Human esophagus cancer tissue is first treated with the fusion protein and then with 218089(Anti-PHTF2 Antibody) at dilution 1/20.



The image on the left is immunohistochemistry of paraffin-embedded Human lung cancer tissue using 218089(Anti-PHTF2 Antibody) at a dilution of 1/20.



In comparison with the IHC on the left, the same paraffin-embedded Human lung cancer tissue is first treated with fusion protein and then with D223681(Anti-PHTF2 Antibody) at dilution 1/20.