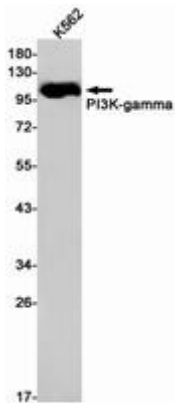


**PI3 KINASE P110 GAMMA RABBIT MAB****Cat.#:** N262716**Product Name:** Anti-PI3 Kinase p110 gamma Rabbit Monoclonal Antibody**Synonyms:** PI3K; PIK3; PI3CG; PI3Kgamma; p110gamma; p120-PI3K**UNIPROT ID:** P48736

**Background:** This gene encodes a protein that belongs to the pi3/pi4-kinase family of proteins. The gene product is an enzyme that phosphorylates phosphoinositides on the 3-hydroxyl group of the inositol ring. It is an important modulator of extracellular signals, including those elicited by E-cadherin-mediated cell-cell adhesion, which plays an important role in maintenance of the structural and functional integrity of epithelia. In addition to its role in promoting assembly of adherens junctions, the protein is thought to play a pivotal role in the regulation of cytotoxicity in NK cells. The gene is located in a commonly deleted segment of chromosome 7 previously identified in myeloid leukemias. Several transcript variants encoding the same protein have been found for this gene.

**Immunogen:** A synthetic peptide of human PI3K-gamma**Applications:** WB,IP**Recommended Dilutions:** WB: 1/500-1/1000 IP: 1/20**Host Species:** Rabbit**Clonality:** Rabbit Monoclonal**Clone ID:** R09-5C8**MW:** Calculated MW: 126 kDa; Observed MW: 110 kDa**Isotype:** IgG**Purification:** Affinity Purified**Species Reactivity:** Human**Conjugation:** Unconjugated**Modification:** Unmodified**Constituents:** PBS (without Mg<sup>2+</sup> and Ca<sup>2+</sup>), pH 7.3 containing 50% glycerol, 0.5% BSA and 0.02% sodium azide**Research Areas:** Signal Transduction**Storage & Shipping:** Store at -20°C. Avoid repeated freezing and thawing



Western blot analysis of PI3 Kinase p110 gamma in K562 lysates using PI3 Kinase p110 gamma antibody.