

PIBF1 RABBIT PAB

Cat.#: S221636

Product Name: Anti-PIBF1 Rabbit Polyclonal Antibody

Synonyms: PIBF; CEP90; C13orf24

UNIPROT ID: Q8WXW3 (Gene Accession - NP_006337)

Background: PIBF (Progesterone-Induced Blocking Factor 1) is synthesized during pregnancy in response to progesterone by progesterone receptor-positive T lymphocytes (mostly gamma-delta T cells). In the presence of PIBF, natural killer (NK) cells inhibit the release of perforin from storage granules and therefore fail to lyse target cells. In humans, the amount of cells that express PIBF is significantly higher in healthy pregnant women than in women at risk for premature pregnancy termination. Full-length PIBF is associated with the nucleus, whereas secretion of shorter forms is induced by activation of the cell. Research suggests that PIBF functions as a transcription factor in its full-length form, while smaller forms may act as cytokines. The PIBF gene encodes a deduced hydrophilic 757-amino acid alpha-helical protein with an N-terminal signal sequence, a leucine zipper motif, a basic zipper sequence, a PEST sequence, a nuclear localization signal, an endoplasmic reticulum membrane retention signal, and many presumed N-glycosylation and phosphorylation sites.

Immunogen: Synthetic peptide of human PIBF1

Applications: ELISA, WB, IHC

Recommended Dilutions: IHC: Oct-50;WB: 500-2000;ELISA: 5000-10000

Host Species: Rabbit

Clonality: Rabbit Polyclonal

Isotype: Immunogen-specific rabbit IgG

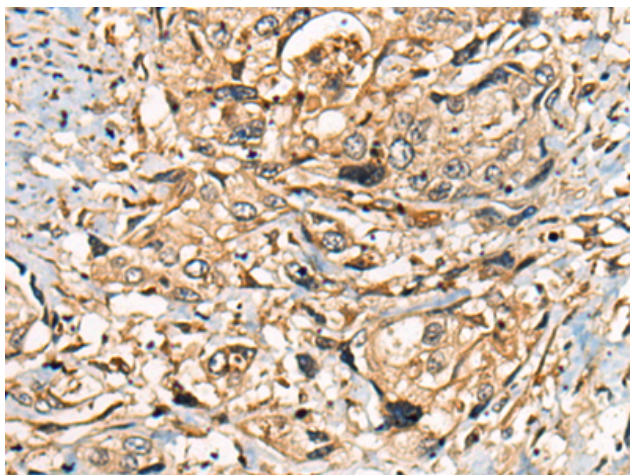
Purification: Antigen affinity purification

Species Reactivity: Human

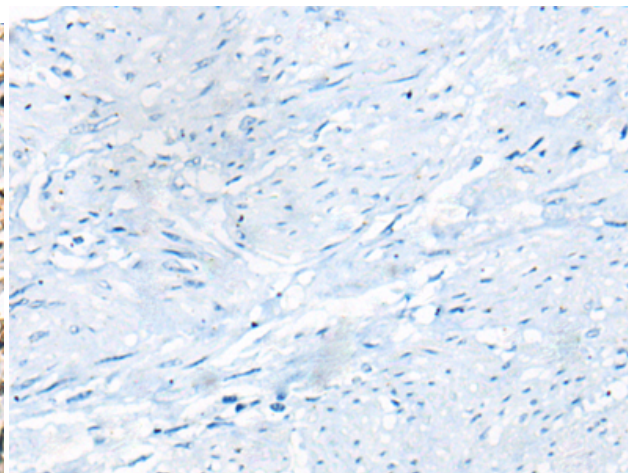
Constituents: PBS (without Mg²⁺ and Ca²⁺), pH 7.4, 150 mM NaCl, 0.05% Sodium Azide and 40% glycerol

Research Areas: Signal Transduction, Cell Biology

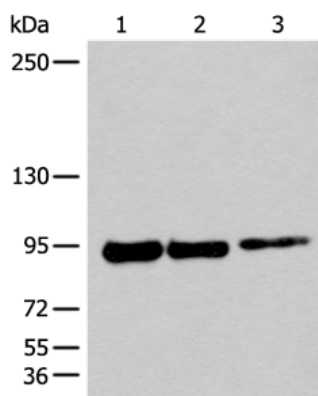
Storage & Shipping: Store at -20°C. Avoid repeated freezing and thawing



Immunohistochemistry analysis of paraffin embedded Human prostate cancer tissue using 221636(PIBF1 Antibody) at a dilution of 1/25(Cytoplasm).



In comparison with the IHC on the left, the same paraffin-embedded Human prostate cancer tissue is first treated with the synthetic peptide and then with 221636(Anti-PIBF1 Antibody) at dilution 1/25.



Gel: 6%SDS-PAGE, Lysate: 40 μ g;
 Lane 1-3: 231, K562 and 293T cell lysates;
 Primary antibody: 221636(PIBF1 Antibody) at dilution 1/250;
 Secondary antibody: Goat anti rabbit IgG at 1/8000 dilution;
 Exposure time: 1 minute