

PIEZO1 RABBIT PAB

Cat.#: S222459

Product Name: Anti-PIEZO1 Rabbit Polyclonal Antibody

Synonyms: ER; DHS; Mib; LMPH3; FAM38A; LMPHM6

UNIPROT ID: Q92508 (Gene Accession - NP_001136336)

Background: The protein encoded by this gene is a mechanically-activated ion channel that links mechanical forces to biological signals. The encoded protein contains 36 transmembrane domains and functions as a homotetramer. Defects in this gene have been associated with dehydrated hereditary stomatocytosis.

Immunogen: Synthetic peptide of human PIEZO1

Applications: ELISA, IHC

Recommended Dilutions: IHC: 50-200; ELISA: 5000-10000

Host Species: Rabbit

Clonality: Rabbit Polyclonal

Isotype: Immunogen-specific rabbit IgG

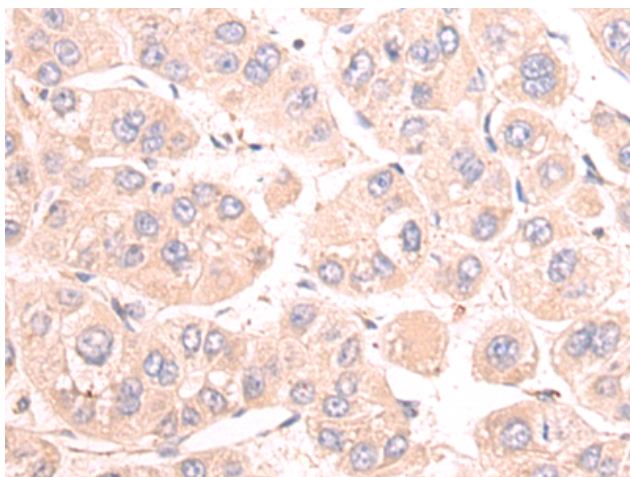
Purification: Antigen affinity purification

Species Reactivity: Human, Mouse, Rat

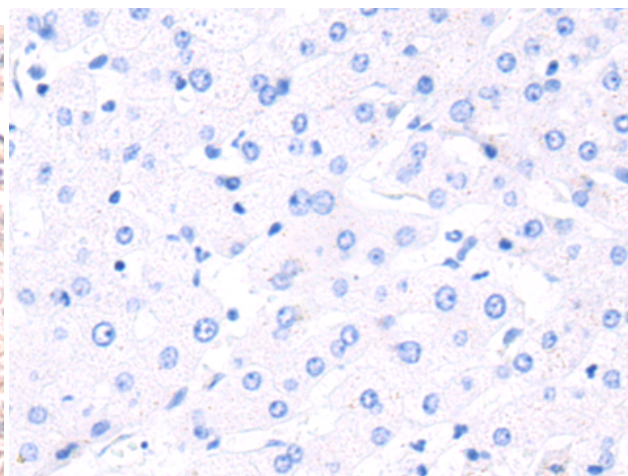
Constituents: PBS (without Mg²⁺ and Ca²⁺), pH 7.4, 150 mM NaCl, 0.05% Sodium Azide and 40% glycerol

Research Areas: Tags & Cell Markers, Neuroscience

Storage & Shipping: Store at -20°C. Avoid repeated freezing and thawing



Immunohistochemistry analysis of paraffin embedded Human liver cancer tissue using 222459(PIEZO1 Antibody) at a dilution of 1/50(Cytoplasm).



In comparison with the IHC on the left, the same paraffin-embedded Human liver cancer tissue is first treated with the synthetic peptide and then with 222459(Anti-PIEZO1 Antibody) at dilution 1/50.