

PIEZO2 RABBIT PAB

Cat.#: S222010

Product Name: Anti-PIEZO2 Rabbit Polyclonal Antibody

Synonyms: DA3; DA5; MWKS; DAIPT; FAM38B; HsT748; HsT771; FAM38B2; C18orf30; C18orf58

UNIPROT ID: Q9H5I5 (Gene Accession - NP_071351)

Background: The protein encoded by this gene contains more than thirty transmembrane domains and likely functions as part of mechanically-activated (MA) cation channels. These channels serve to connect mechanical forces to biological signals. The encoded protein quickly adapts MA currents in somatosensory neurons. Defects in this gene are a cause of type 5 distal arthrogryposis. Several alternatively spliced transcript variants of this gene have been described, but their full-length nature is not known.

Immunogen: Synthetic peptide of human PIEZO2

Applications: ELISA, IHC

Recommended Dilutions: IHC: 40-200; ELISA: 5000-10000

Host Species: Rabbit

Clonality: Rabbit Polyclonal

Isotype: Immunogen-specific rabbit IgG

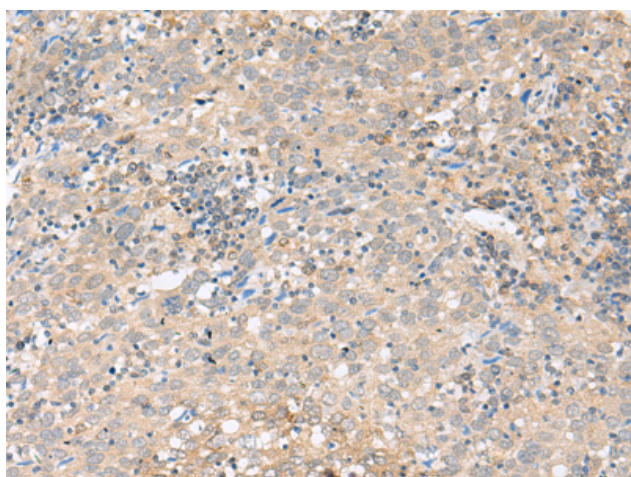
Purification: Antigen affinity purification

Species Reactivity: Human, Mouse

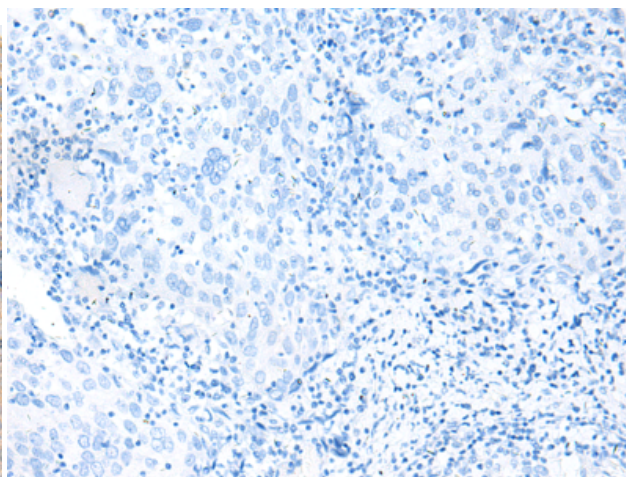
Constituents: PBS (without Mg²⁺ and Ca²⁺), pH 7.4, 150 mM NaCl, 0.05% Sodium Azide and 40% glycerol

Research Areas: Cell Biology

Storage & Shipping: Store at -20°C. Avoid repeated freezing and thawing



Immunohistochemistry analysis of paraffin embedded Human cervical cancer tissue using 222010(PIEZO2 Antibody) at a dilution of 1/35(Cytoplasm).



In comparison with the IHC on the left, the same paraffin-embedded Human cervical cancer tissue is first treated with the synthetic peptide and then with 222010(Anti-PIEZO2 Antibody) at dilution 1/35.