

## PIK3R3 RABBIT PAB

**Cat.#:** S220331

**Product Name:** Anti-PIK3R3 Rabbit Polyclonal Antibody

**Synonyms:** p55; p55-GAMMA

**UNIPROT ID:** Q92569 (Gene Accession - NP\_001107644 )

**Background:** Phosphatidylinositol 3-kinase is a lipid kinase that phosphorylates the inositol ring of phosphatidylinositol and related compounds at the 3<sup>o</sup> position. PI 3-kinase p55 (PIK3R3) is comprised of a catalytic subunit and a regulatory subunit. The human p55 protein is composed of a rare amino terminal region followed by a proline-rich motif and two Src homology 2 (SH2) domains. PI 3-kinase p55 mRNAs are expressed in most human fetal and adult tissues; predominant expression is observed in the adult testis. Splice variant(s) of PI 3-kinase p55 have been identified; one of which has a deletion of 36 amino acids at the amino terminus and another which has an insertion of 59 amino acids at position 256 between the SH2 domains. Research suggests that PI 3-kinase p55 interacts with the IGFIR (Insulin-like growth factor-I receptor) and IR (Insulin receptor) and may be involved in PI 3-kinase activation by these receptors.

**Immunogen:** Synthetic peptide of human PIK3R3

**Applications:** ELISA, WB, IHC

**Recommended Dilutions:** IHC: 25-100;WB: 500-2000;ELISA: 2000-5000

**Host Species:** Rabbit

**Clonality:** Rabbit Polyclonal

**Isotype:** Immunogen-specific rabbit IgG

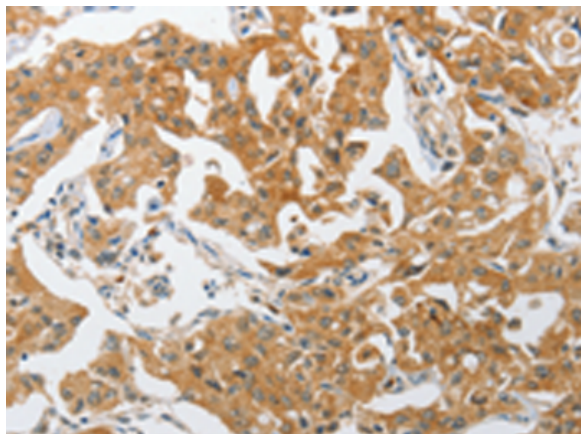
**Purification:** Antigen affinity purification

**Species Reactivity:** Human, Mouse, Rat

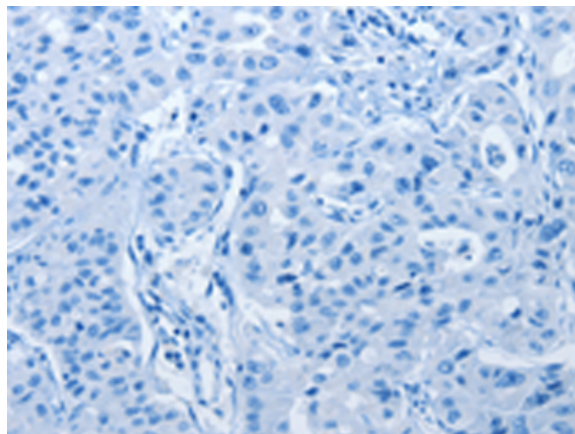
**Constituents:** PBS (without Mg<sup>2+</sup> and Ca<sup>2+</sup>), pH 7.4, 150 mM NaCl, 0.05% Sodium Azide and 40% glycerol

**Research Areas:** Signal Transduction, Immunology

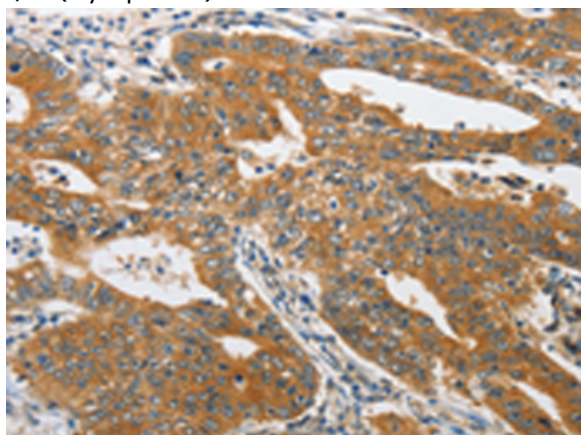
**Storage & Shipping:** Store at -20°C. Avoid repeated freezing and thawing



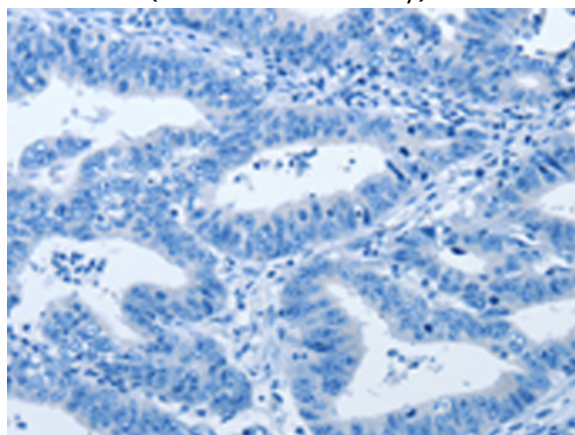
Immunohistochemistry analysis of paraffin embedded Human lung cancer tissue using 220331(PIK3R3 Antibody) at a dilution of 1/25(Cytoplasm).



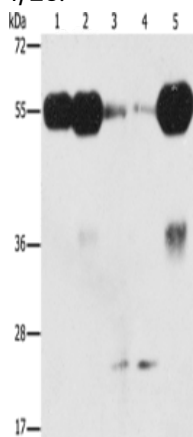
In comparison with the IHC on the left, the same paraffin-embedded Human lung cancer tissue is first treated with the synthetic peptide and then with 220331(Anti-PIK3R3 Antibody) at dilution 1/25.



The image on the left is immunohistochemistry of paraffin-embedded Human gastric cancer tissue using 220331(Anti-PIK3R3 Antibody) at a dilution of 1/25.



In comparison with the IHC on the left, the same paraffin-embedded Human gastric cancer tissue is first treated with synthetic peptide and then with D261373(Anti-PIK3R3 Antibody) at dilution 1/25.



Gel: 10%SDS-PAGE, Lysate: 40 µg;

Lane 1-5: Mouse brain tissue, human fetal brain tissue, mouse testis tissue, hela cells, human fetal kidney tissue;

Primary antibody: 220331(PIK3R3 Antibody) at dilution 1/250;

Secondary antibody: Goat anti rabbit IgG at 1/8000 dilution;

Exposure time: 2 minutes



# Product Description

Pioneering GTPase and Oncogene Product Development since 2010

---