

## PIM2 RABBIT MAB

**Cat.#:** N263494

**Product Name:** Anti-PIM2 Rabbit Monoclonal Antibody

**Synonyms:** PIM2; Serine/threonine-protein kinase pim-2; Pim-2h

**UNIPROT ID:** Q9PIW9

**Background:** Promotes cell survival in response to a variety of proliferative signals via positive regulation of the I-kappaB kinase/NF-kappaB cascade; this process requires phosphorylation of MAP3K8/COT. Prevents apoptosis induced by growth factor withdrawal via inhibition of caspase-3 activation, and via phosphorylation of pro-apoptotic proteins.

**Immunogen:** A synthetic peptide of human PIM2

**Applications:** WB,IP

**Recommended Dilutions:** WB: 1/500-1/1000 IP: 1/20

**Host Species:** Rabbit

**Clonality:** Rabbit Monoclonal

**Clone ID:** R04-5D8

**MW:** Calculated MW: 34 kDa; Observed MW: 40,38,34 kDa

**Isotype:** IgG

**Purification:** Affinity Purified

**Species Reactivity:** Human

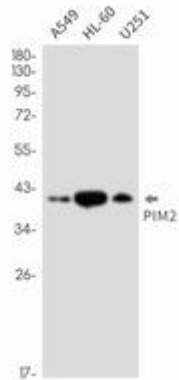
**Conjugation:** Unconjugated

**Modification:** Unmodified

**Constituents:** PBS (without Mg<sup>2+</sup> and Ca<sup>2+</sup>), pH 7.3 containing 50% glycerol, 0.5% BSA and 0.02% sodium azide

**Research Areas:** Signal Transduction

**Storage & Shipping:** Store at -20°C. Avoid repeated freezing and thawing



Western blot analysis of PIM2 in A549, HL-60, U251 lysates using PIM2 antibody.