

PIN4 RABBIT MAB

Cat.#: N262720

Product Name: Anti-PIN4 Rabbit Monoclonal Antibody

Synonyms: EPVH; PARI4; PARI7

UNIPROT ID: Q9Y237

Background: Isoform 1 is involved as a ribosomal RNA processing factor in ribosome biogenesis. Binds to tightly bent AT-rich stretches of double-stranded DNA.

Immunogen: A synthetic peptide of human PIN4

Applications: WB,IP

Recommended Dilutions: WB: 1/500-1/1000 IP: 1/20

Host Species: Rabbit

Clonality: Rabbit Monoclonal

Clone ID: R06-815

MW: Calculated MW: 14 kDa; Observed MW: 14 kDa

Isotype: IgG

Purification: Affinity Purified

Species Reactivity: Human,Rat,Hamster

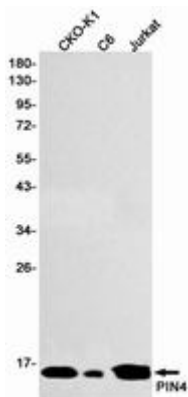
Conjugation: Unconjugated

Modification: Unmodified

Constituents: PBS (without Mg²⁺ and Ca²⁺), pH 7.3 containing 50% glycerol, 0.5% BSA and 0.02% sodium azide

Research Areas: Epigenetics and Nuclear Signaling

Storage & Shipping: Store at -20°C. Avoid repeated freezing and thawing



Western blot analysis of PIN4 in CHO-K1, C6, Jurkat lysates using PIN4 antibody.



Product Description

Pioneering GTPase and Oncogene Product Development since 2010
