

PIP RABBIT PAB

Cat.#: S217470

Product Name: Anti-PIP Rabbit Polyclonal Antibody

Synonyms: GPIP4; GCDFP15; GCDFP-15

UNIPROT ID: P12273 (Gene Accession - BC010950)

Background: The hormonally responsive prolactin-inducible protein (PIP) gene is expressed in benign and malignant breast tumor tissues and in some normal exocrine organs such as sweat, salivary, and lacrimal glands.

Immunogen: Fusion protein of human PIP

Applications: ELISA, IHC

Recommended Dilutions: IHC: 50-100; ELISA: 2000-10000

Host Species: Rabbit

Clonality: Rabbit Polyclonal

Isotype: Immunogen-specific rabbit IgG

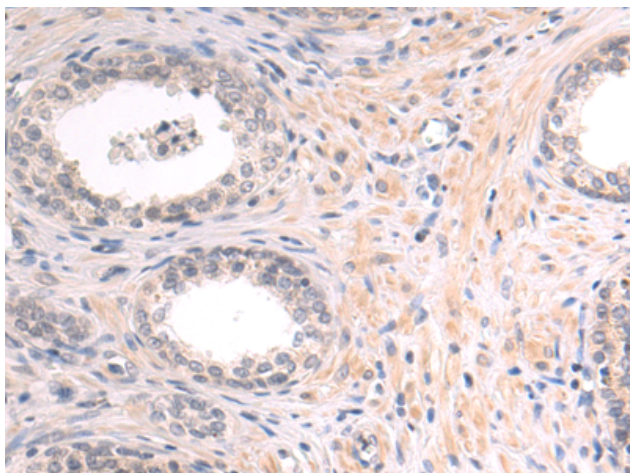
Purification: Antigen affinity purification

Species Reactivity: Human

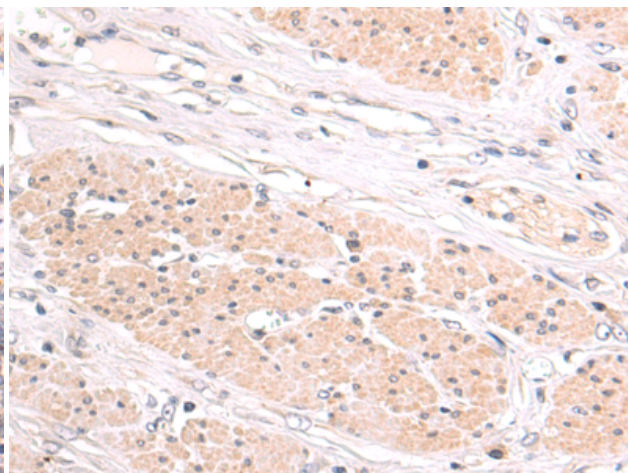
Constituents: PBS (without Mg²⁺ and Ca²⁺), pH 7.4, 150 mM NaCl, 0.05% Sodium Azide and 40% glycerol

Research Areas: Signal Transduction

Storage & Shipping: Store at -20°C. Avoid repeated freezing and thawing



Immunohistochemistry analysis of paraffin-embedded Human prostate cancer tissue using 217470(PIP Antibody) at a dilution of 1/50(Secreted).



Immunohistochemistry analysis of paraffin-embedded Human esophagus cancer tissue using 217470(Anti-PIP Antibody) at a dilution of 1/50.