

PIP5K1A RABBIT PAB

Cat.#: S217125

Product Name: Anti-PIP5K1A Rabbit Polyclonal Antibody

Synonyms:

UNIPROT ID: Q99755 (Gene Accession - BC007833)

Background: Phosphatidylinositol-4-phosphate 5-kinase type-1 alpha is an enzyme that in humans is encoded by the PIP5K1A gene. Catalyzes the phosphorylation of phosphatidylinositol 4-phosphate (PtdIns4P) to form phosphatidylinositol 4,5-bisphosphate (PtdIns(4,5)P₂). PtdIns(4,5)P₂ is involved in a variety of cellular processes and is the substrate to form phosphatidylinositol 3,4,5-trisphosphate (PtdIns(3,4,5)P₃), another second messenger. The majority of PtdIns(4,5)P₂ is thought to occur via type I phosphatidylinositol 4-phosphate 5-kinases given the abundance of PtdIns4P.

Immunogen: Fusion protein of human PIP5K1A

Applications: ELISA, WB, IHC

Recommended Dilutions: IHC: 25-100;WB: 200-1000;ELISA: 2000-5000

Host Species: Rabbit

Clonality: Rabbit Polyclonal

Isotype: Immunogen-specific rabbit IgG

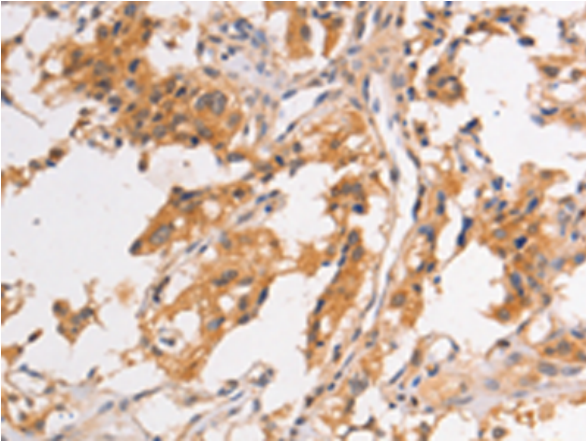
Purification: Antigen affinity purification

Species Reactivity: Human

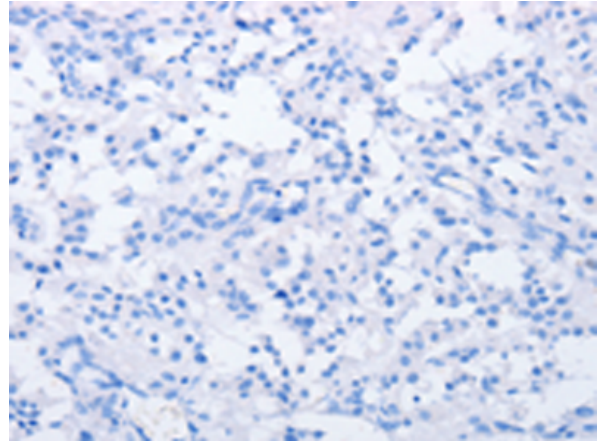
Constituents: PBS (without Mg²⁺ and Ca²⁺), pH 7.4, 150 mM NaCl, 0.05% Sodium Azide and 40% glycerol

Research Areas: Signal Transduction

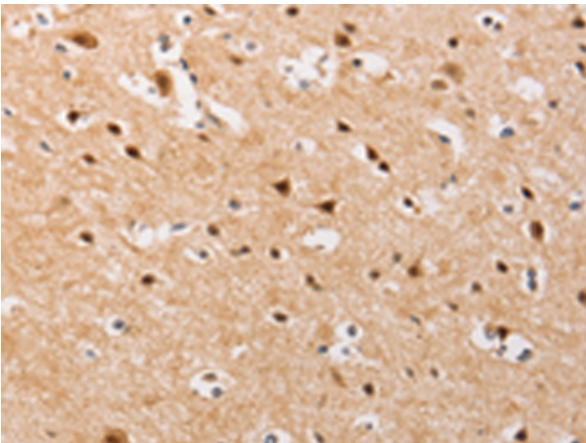
Storage & Shipping: Store at -20°C. Avoid repeated freezing and thawing



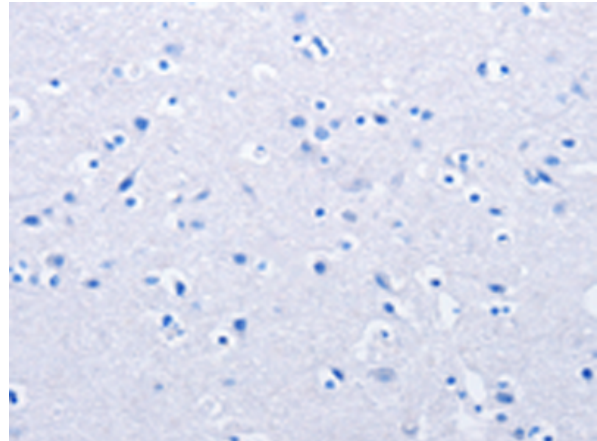
Immunohistochemistry analysis of paraffin embedded Human thyroid cancer tissue using 217125(PIP5K1A Antibody) at a dilution of 1/30(Cytoplasm).



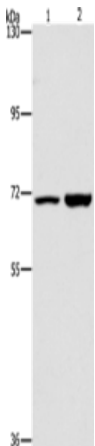
In comparison with the IHC on the left, the same paraffin-embedded Human thyroid cancer tissue is first treated with the fusion protein and then with 217125(Anti-PIP5K1A Antibody) at dilution 1/30.



The image on the left is immunohistochemistry of paraffin-embedded Human brain tissue using 217125(Anti-PIP5K1A Antibody) at a dilution of 1/30.



In comparison with the IHC on the left, the same paraffin-embedded Human brain tissue is first treated with fusion protein and then with D221835(Anti-PIP5K1A Antibody) at dilution 1/30.



Gel: 6%SDS-PAGE, Lysate: 40 µg;
Lane 1-2: PC3 cells, 293T cells;
Primary antibody: 217125(PIP5K1A Antibody) at dilution 1/300;
Secondary antibody: Goat anti rabbit IgG at 1/8000 dilution;
Exposure time: 40 seconds



Product Description

Pioneering GTPase and Oncogene Product Development since 2010
