

PIPOX RABBIT PAB

Cat.#: S219371

Product Name: Anti-PIPOX Rabbit Polyclonal Antibody

Synonyms: LPIPOX

UNIPROT ID: Q9P0Z9 (Gene Accession - BC027622)

Background: Metabolizes sarcosine, L-pipecolic acid and L-proline.

Immunogen: Fusion protein of human PIPOX

Applications: ELISA, IHC

Recommended Dilutions: IHC: 50-200; ELISA: 5000-10000

Host Species: Rabbit

Clonality: Rabbit Polyclonal

Isotype: Immunogen-specific rabbit IgG

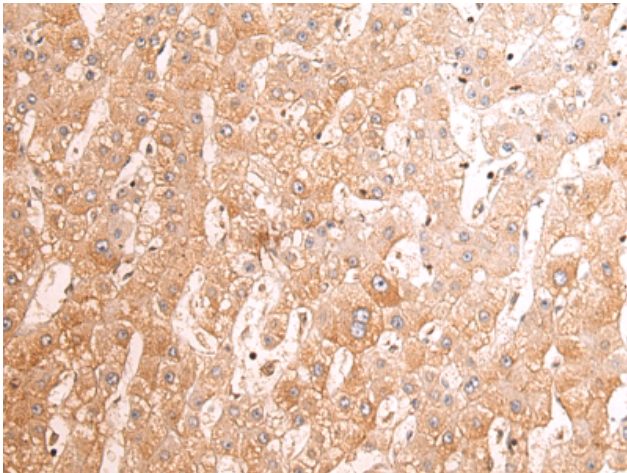
Purification: Antigen affinity purification

Species Reactivity: Human, Mouse

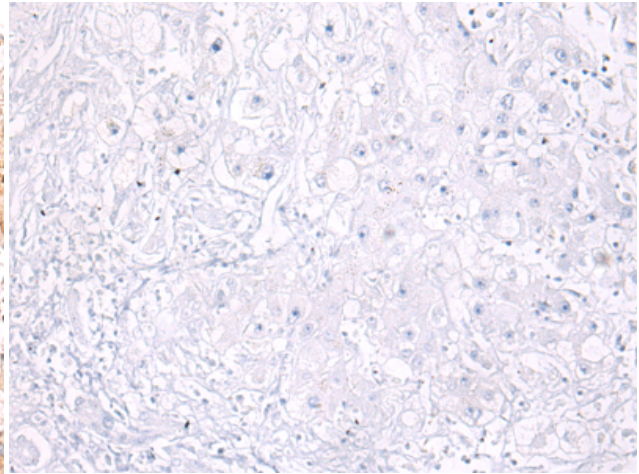
Constituents: PBS (without Mg²⁺ and Ca²⁺), pH 7.4, 150 mM NaCl, 0.05% Sodium Azide and 40% glycerol

Research Areas: Metabolism

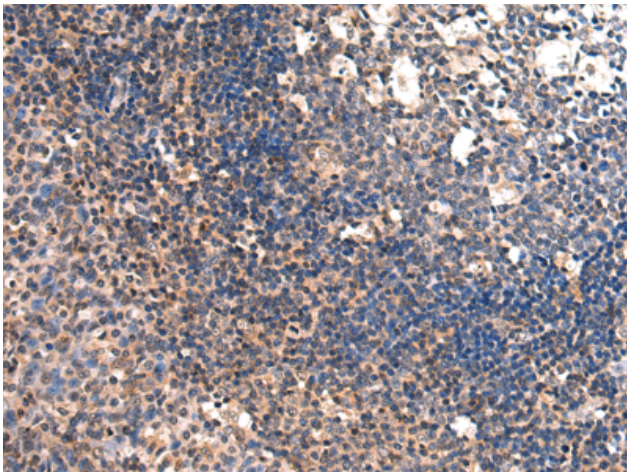
Storage & Shipping: Store at -20°C. Avoid repeated freezing and thawing



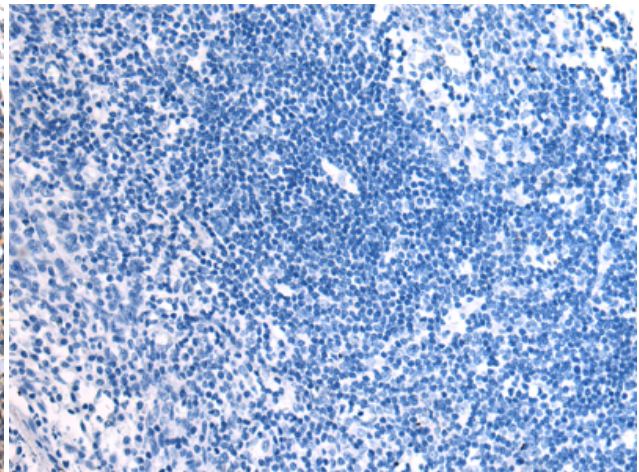
Immunohistochemistry analysis of paraffin embedded Human liver cancer tissue using 219371(PIPOX Antibody) at a dilution of 1/110(Peroxisome).



In comparison with the IHC on the left, the same paraffin-embedded Human liver cancer tissue is first treated with the fusion protein and then with 219371(Anti-PIPOX Antibody) at dilution 1/110.



The image on the left is immunohistochemistry of paraffin-embedded Human tonsil tissue using 219371(Anti-PIPOX Antibody) at a dilution of 1/110.



In comparison with the IHC on the left, the same paraffin-embedded Human tonsil tissue is first treated with fusion protein and then with D226564(Anti-PIPOX Antibody) at dilution 1/110.