

PITPNM1 RABBIT PAB

Cat.#: S211390

Product Name: Anti-PITPNM1 Rabbit Polyclonal Antibody

Synonyms: Rd9; NIR2; RDGB; DRES9; RDGB1; RDGBA; PITPNM; RDGBA1

UNIPROT ID: O00562 (Gene Accession - BC022230)

Background: PITPNM1 belongs to a family of membrane-associated phosphatidylinositol transfer domain-containing proteins that share homology with the Drosophila retinal degeneration B (rdgB) protein.

Immunogen: Fusion protein of human PITPNM1

Applications: ELISA, IHC

Recommended Dilutions: IHC: 25-100; ELISA: 1000-2000

Host Species: Rabbit

Clonality: Rabbit Polyclonal

Isotype: Immunogen-specific rabbit IgG

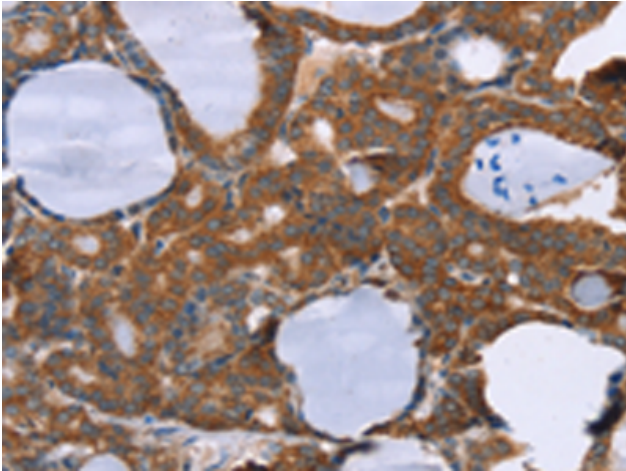
Purification: Antigen affinity purification

Species Reactivity: Human, Mouse, Rat

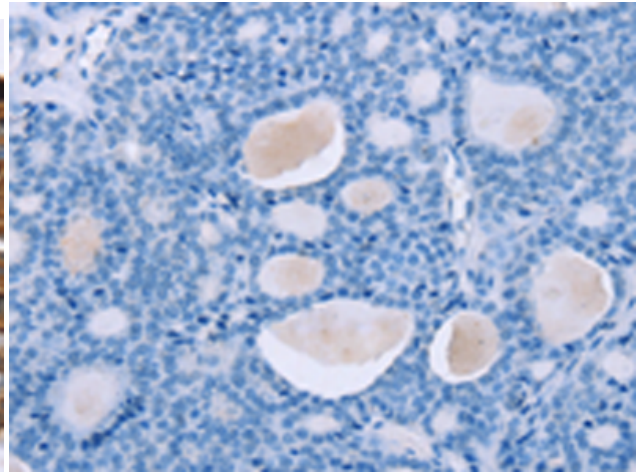
Constituents: PBS (without Mg²⁺ and Ca²⁺), pH 7.4, 150 mM NaCl, 0.05% Sodium Azide and 40% glycerol

Research Areas: Signal Transduction, Cancer, Neuroscience

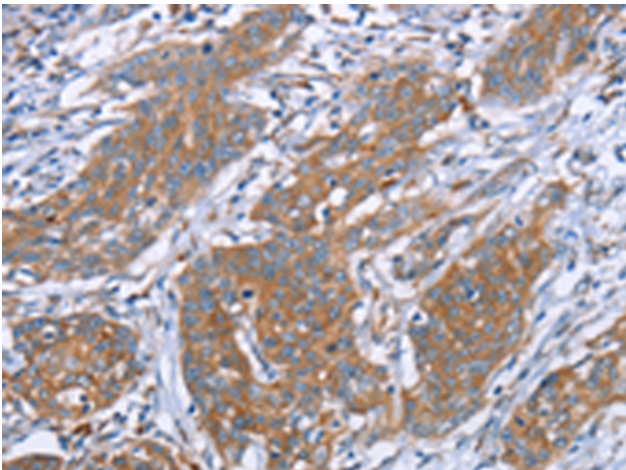
Storage & Shipping: Store at -20°C. Avoid repeated freezing and thawing



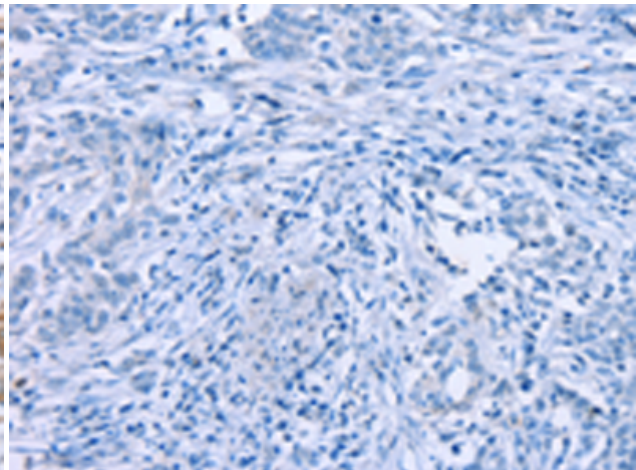
Immunohistochemistry analysis of paraffin embedded Human thyroid cancer tissue using 211390 (PITPNM1 Antibody) at a dilution of 1/40 (Cytoplasm).



In comparison with the IHC on the left, the same paraffin-embedded Human thyroid cancer tissue is first treated with the fusion protein and then with 211390 (Anti-PITPNM1 Antibody) at dilution 1/40.



The image on the left is immunohistochemistry of paraffin-embedded Human cervical cancer tissue using 211390 (Anti-PITPNM1 Antibody) at a dilution of 1/40.



In comparison with the IHC on the left, the same paraffin-embedded Human cervical cancer tissue is first treated with fusion protein and then with D122766 (Anti-PITPNM1 Antibody) at dilution 1/40.