

## PIWIL3 RABBIT PAB

**Cat.#:** S214095

**Product Name:** Anti-PIWIL3 Rabbit Polyclonal Antibody

**Synonyms:** HIWI3

**UNIPROT ID:** Q7Z3Z3 (Gene Accession - NP\_001008496 )

**Background:** This gene encodes a member of the PIWI subfamily of Argonaute family proteins. This subfamily of proteins contains a PAZ domain, found in proteins involved in RNA-mediated gene silencing, and a C-terminal Piwi domain. The encoded protein is thought to function in maintenance of germline cells. Multiple transcript variants encoding different isoforms have been found for this gene.

**Immunogen:** Synthetic peptide of human PIWIL3

**Applications:** ELISA, IHC

**Recommended Dilutions:** IHC: 50-100; ELISA: 5000-10000

**Host Species:** Rabbit

**Clonality:** Rabbit Polyclonal

**Isotype:** Immunogen-specific rabbit IgG

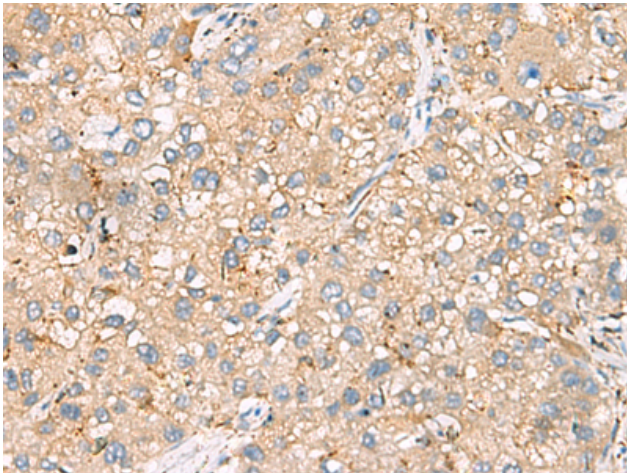
**Purification:** Antigen affinity purification

**Species Reactivity:** Human

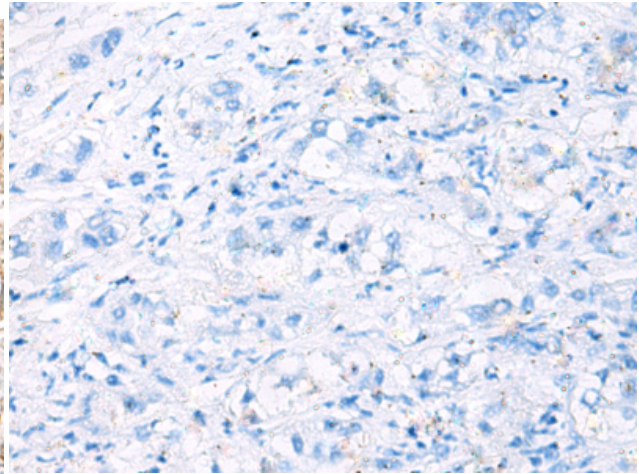
**Constituents:** PBS (without Mg<sup>2+</sup> and Ca<sup>2+</sup>), pH 7.4, 150 mM NaCl, 0.05% Sodium Azide and 40% glycerol

**Research Areas:** Epigenetics and Nuclear Signaling, Stem Cells, Developmental Biology

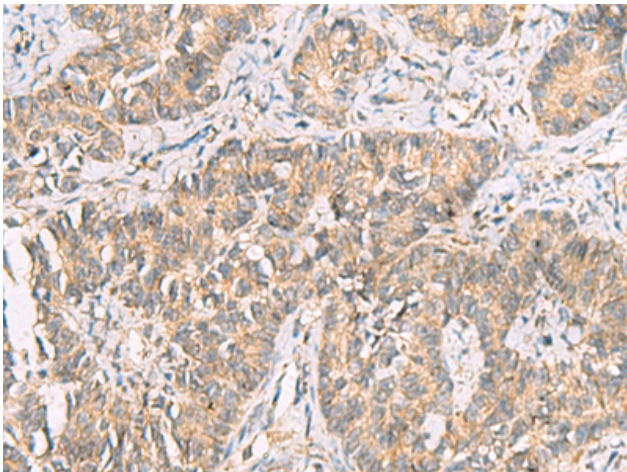
**Storage & Shipping:** Store at -20°C. Avoid repeated freezing and thawing



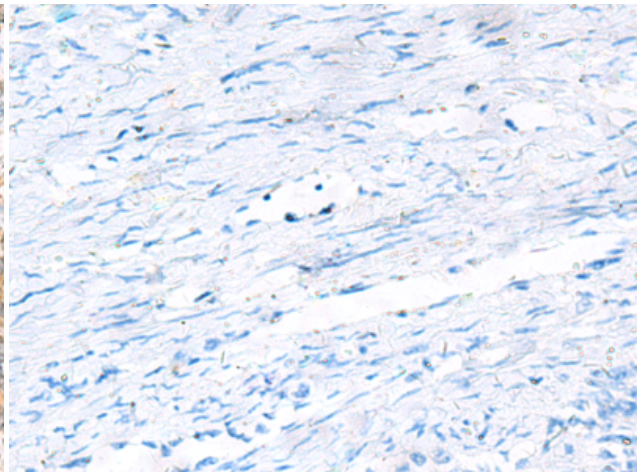
Immunohistochemistry analysis of paraffin embedded Human liver cancer tissue using 214095 (PIWIL1 Antibody) at a dilution of 1/30 (Cytoplasm).



In comparison with the IHC on the left, the same paraffin-embedded Human liver cancer tissue is first treated with the synthetic peptide and then with 214095 (Anti-PIWIL1 Antibody) at dilution 1/30.



The image on the left is immunohistochemistry of paraffin-embedded Human ovarian cancer tissue using 214095 (Anti-PIWIL1 Antibody) at a dilution of 1/30.



In comparison with the IHC on the left, the same paraffin-embedded Human ovarian cancer tissue is first treated with synthetic peptide and then with D161332 (Anti-PIWIL1 Antibody) at dilution 1/30.