

## PIWIL4 RABBIT PAB

**Cat.#:** S216730

**Product Name:** Anti-PIWIL4 Rabbit Polyclonal Antibody

**Synonyms:** HIWI2, MIWI2

**UNIPROT ID:** Q7Z3Z4 (Gene Accession - BC031060 )

**Background:** PIWIL4 belongs to the Argonaute family of proteins, which function in development and maintenance of germline stem cells. It plays a central role during spermatogenesis by repressing transposable elements and prevent their mobilization, which is essential for the germline integrity. May be involved in the chromatin-modifying pathway by inducing 'Lys-9' methylation of histone H3 at some loci.

**Immunogen:** Fusion protein of human PIWIL4

**Applications:** ELISA, IHC

**Recommended Dilutions:** IHC: 50-200; ELISA: 2000-5000

**Host Species:** Rabbit

**Clonality:** Rabbit Polyclonal

**Isotype:** Immunogen-specific rabbit IgG

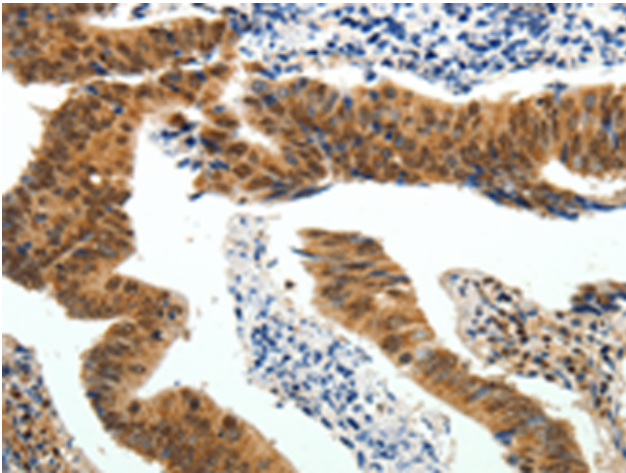
**Purification:** Antigen affinity purification

**Species Reactivity:** Human, Mouse, Rat

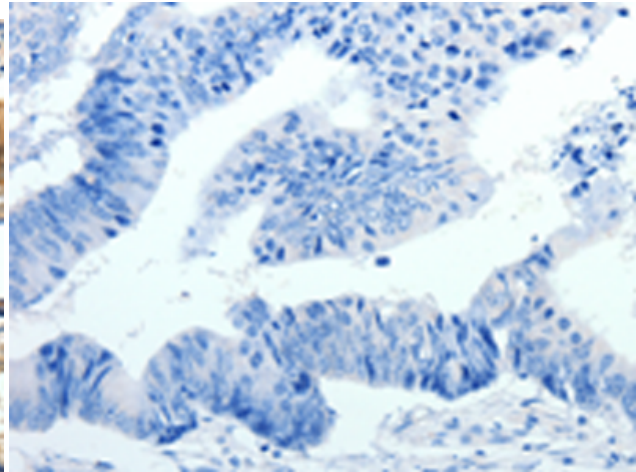
**Constituents:** PBS (without Mg<sup>2+</sup> and Ca<sup>2+</sup>), pH 7.4, 150 mM NaCl, 0.05% Sodium Azide and 40% glycerol

**Research Areas:** Epigenetics and Nuclear Signaling

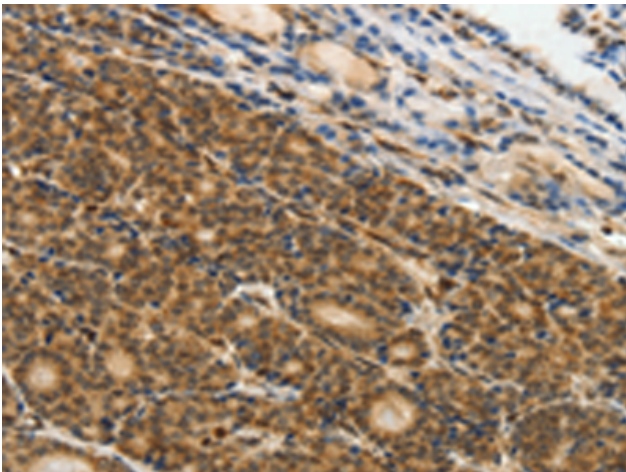
**Storage & Shipping:** Store at -20°C. Avoid repeated freezing and thawing



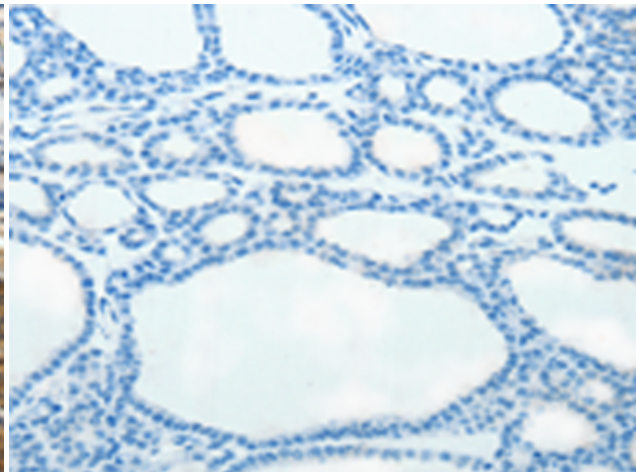
Immunohistochemistry analysis of paraffin embedded Human colon cancer tissue using 216730 (PIWIL4 Antibody) at a dilution of 1/25 (Cytoplasm, Nucleus).



In comparison with the IHC on the left, the same paraffin-embedded Human colon cancer tissue is first treated with the fusion protein and then with 216730 (Anti-PIWIL4 Antibody) at dilution 1/25.



The image on the left is immunohistochemistry of paraffin-embedded Human thyroid cancer tissue using 216730 (Anti-PIWIL4 Antibody) at a dilution of 1/25.



In comparison with the IHC on the left, the same paraffin-embedded Human thyroid cancer tissue is first treated with fusion protein and then with D221135 (Anti-PIWIL4 Antibody) at dilution 1/25.