

PKC GAMMA RABBIT MAB

Cat.#: N262730

Product Name: Anti-PKC gamma Rabbit Monoclonal Antibody

Synonyms: PRKCG; PKCG; Protein kinase C gamma type; PKC-gamma

UNIPROT ID: P05129

Background: This is a calcium-activated, phospholipid-dependent, serine- and threonine-specific enzyme.

Immunogen: Recombinant protein of human PKC

Applications: WB,IP

Recommended Dilutions: WB: 1/500-1/1000 IP: 1/20

Host Species: Rabbit

Clonality: Rabbit Monoclonal

Clone ID: R06-8C6

MW: Calculated MW: 78 kDa; Observed MW: 78 kDa

Isotype: IgG

Purification: Affinity Purified

Species Reactivity: Human,Rat

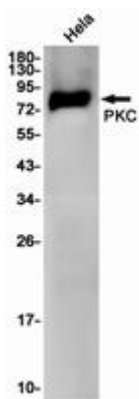
Conjugation: Unconjugated

Modification: Unmodified

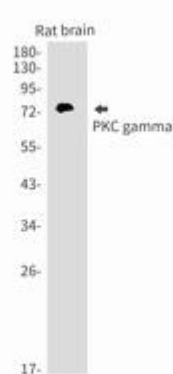
Constituents: PBS (without Mg²⁺ and Ca²⁺), pH 7.3 containing 50% glycerol, 0.5% BSA and 0.02% sodium azide

Research Areas: Signal Transduction

Storage & Shipping: Store at -20°C. Avoid repeated freezing and thawing



Western blot analysis of PKC in HeLa lysates using PKC antibody.



Western blot analysis of PKC gamma in rat brain lysates using PKC gamma antibody.



Product Description

Pioneering GTPase and Oncogene Product Development since 2010
