

PLA2G15 RABBIT PAB

Cat.#: S219309

Product Name: Anti-PLA2G15 Rabbit Polyclonal Antibody

Synonyms: ACS; LLPL; LPLA2; LYPLA3; GXVPLA2

UNIPROT ID: Q8NCC3 (Gene Accession - BC011640)

Background: Lysophospholipases are enzymes that act on biological membranes to regulate the multifunctional lysophospholipids. The protein encoded by this gene hydrolyzes lysophosphatidylcholine to glycerophosphorylcholine and a free fatty acid. This enzyme is present in the plasma and thought to be associated with high-density lipoprotein. A later paper contradicts the function of this gene. It demonstrates that this gene encodes a lysosomal enzyme instead of a lysophospholipase and has both calcium-independent phospholipase A2 and transacylase activities.

Immunogen: Fusion protein of human PLA2G15

Applications: ELISA, IHC

Recommended Dilutions: IHC: 50-200; ELISA: 5000-10000

Host Species: Rabbit

Clonality: Rabbit Polyclonal

Isotype: Immunogen-specific rabbit IgG

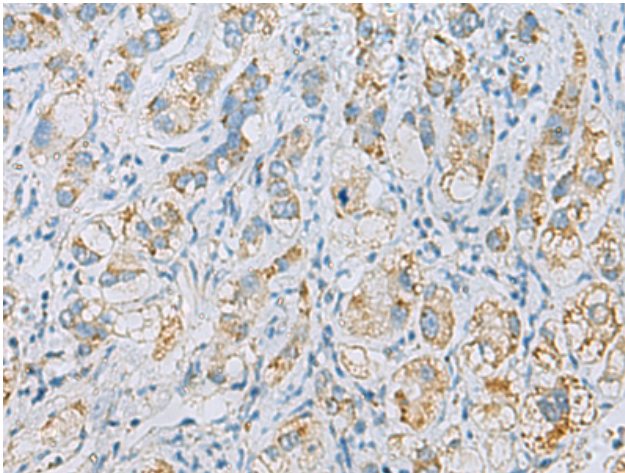
Purification: Antigen affinity purification

Species Reactivity: Human, Mouse, Rat

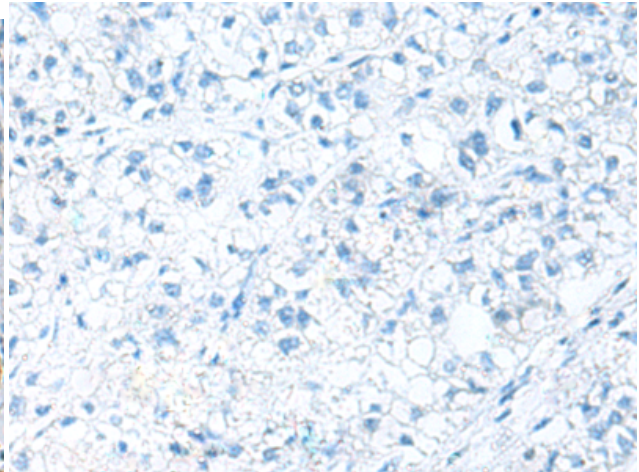
Constituents: PBS (without Mg²⁺ and Ca²⁺), pH 7.4, 150 mM NaCl, 0.05% Sodium Azide and 40% glycerol

Research Areas: Metabolism, Signal Transduction, Epigenetics and Nuclear Signaling

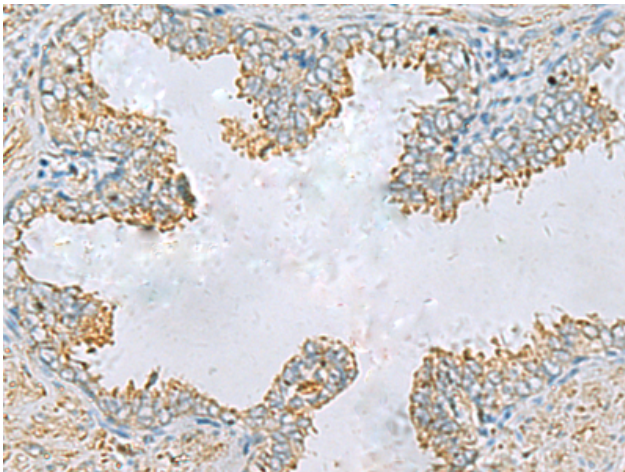
Storage & Shipping: Store at -20°C. Avoid repeated freezing and thawing



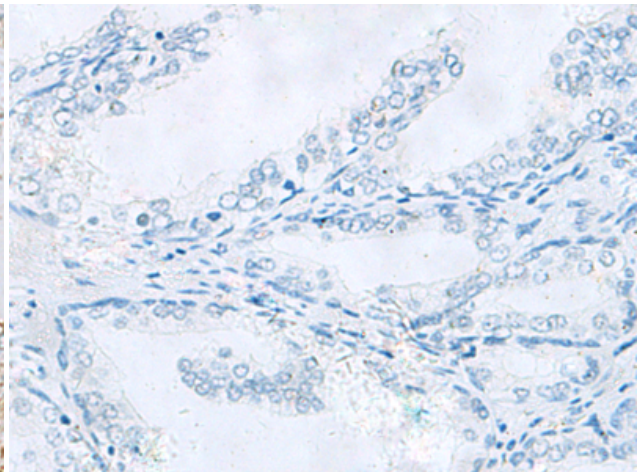
Immunohistochemistry analysis of paraffin embedded Human liver cancer tissue using 219309(PLA2G15 Antibody) at a dilution of 1/65(Cytoplasm).



In comparison with the IHC on the left, the same paraffin-embedded Human liver cancer tissue is first treated with the fusion protein and then with 219309(Anti-PLA2G15 Antibody) at dilution 1/65.



The image on the left is immunohistochemistry of paraffin-embedded Human prostate cancer tissue using 219309(Anti-PLA2G15 Antibody) at a dilution of 1/65.



In comparison with the IHC on the left, the same paraffin-embedded Human prostate cancer tissue is first treated with fusion protein and then with D226268(Anti-PLA2G15 Antibody) at dilution 1/65.