

## PLACENTAL ALKALINE PHOSPHATASE RABBIT PAB

**Cat.#:** N225111

**Product Name:** Anti-Placental Alkaline Phosphatase Rabbit pAb

**Synonyms:** ALPP; PLAP; Alkaline phosphatase; placental type; Alkaline phosphatase Regan isozyme; Placental alkaline phosphatase 1; PLAP-1; ALPPL2; ALPPL; Alkaline phosphatase; placental-likeALP-1; Alkaline phosphatase Nagao isozyme; Germ cell alkaline phosphatase; GCAP; Placental alkaline phosphatase-like; PLAP-like

**UNIPROT ID:** P05187/P10696

**Background:** PLAP may assist in guiding migratory cells and transporting specific molecules, such as fatty acids and immunoglobulins, across the plasma membrane. The three tissue-specific APs identified in human, PLAP, germ cell AP (GCAP) and intestinal AP, are 90-98% homologous and their genes are clustered on chromosome 2q.

**Immunogen:** The antiserum was produced against synthesized peptide derived from the N-terminal region of human ALPP/ALPPL2. AA range:1-50

**Applications:** WB,ELISA

**Recommended Dilutions:** WB: 1/500-1/1000 ELISA: 1/10000

**Host Species:** Rabbit

**Clonality:** Rabbit Polyclonal

**Clone ID:** -

**MW:** Calculated MW: 57 kDa; Observed MW: 60 kDa

**Isotype:** IgG

**Purification:** Affinity Purified

**Species Reactivity:** Human,Mouse

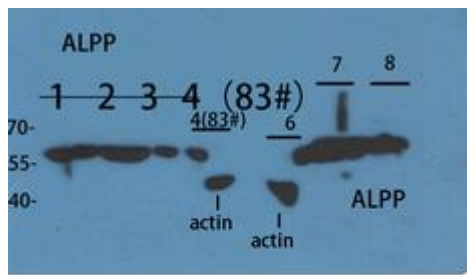
**Conjugation:** Unconjugated

**Modification:** Unmodified

**Constituents:** PBS (without Mg<sup>2+</sup> and Ca<sup>2+</sup>), pH 7.3 containing 50% glycerol, 0.5% BSA and 0.02% sodium azide

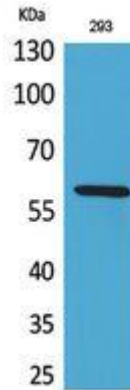
**Research Areas:** Tags & Cell Markers

**Storage & Shipping:** Store at -20°C. Avoid repeated freezing and thawing



1 2 3 4 customer's cell  
6 293T  
7 HeLa  
8 K562

Western blot analysis of Placental Alkaline Phosphatase in lysates using ALPP/ALPPL2 antibody.



Western blot analysis of Placental Alkaline Phosphatase in 293 lysates using Placental Alkaline Phosphatase antibody.