

## PLACENTAL LACTOGEN RABBIT PAB

**Cat.#:** N225211

**Product Name:** Anti-Placental Lactogen Rabbit pAb

**Synonyms:** chorionic somatomammotropin hormone 1; PL; CSA; CS-1; CSMT; hCS-1; hCS-A

**UNIPROT ID:** P0DML2

**Background:** Produced only during pregnancy and is involved in stimulating lactation, fetal growth and metabolism.

**Immunogen:** Synthetic peptide from human protein at AA range: 161-210

**Applications:** WB,IHC-P,ELISA

**Recommended Dilutions:** WB: 1/500-1/1000 IHC: 1/50-1/100 ELISA: 1/10000

**Host Species:** Rabbit

**Clonality:** Rabbit Polyclonal

**Clone ID:** -

**MW:** Calculated MW: 25 kDa; Observed MW: 25 kDa

**Isotype:** IgG

**Purification:** Affinity Purified

**Species Reactivity:** Human

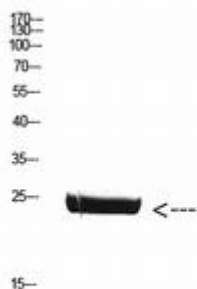
**Conjugation:** Unconjugated

**Modification:** Unmodified

**Constituents:** PBS (without Mg<sup>2+</sup> and Ca<sup>2+</sup>), pH 7.3 containing 50% glycerol, 0.5% BSA and 0.02% sodium azide

**Research Areas:** Signal Transduction

**Storage & Shipping:** Store at -20°C. Avoid repeated freezing and thawing



Western blot analysis of Placental Lactogen in mouse brain lysates using Placental Lactogen antibody.



# Product Description

Pioneering GTPase and Oncogene Product Development since 2010

---