

## PLASMINOGEN RECEPTOR RABBIT PAB

**Cat.#:** N225210

**Product Name:** Anti-Plasminogen Receptor Rabbit pAb

**Synonyms:** Plasminogen receptor (KT; Plg-R(KT))

**UNIPROT ID:** Q9HBL7

**Background:** Receptor for plasminogen.

**Immunogen:** The antiserum was produced against synthesized peptide derived from the Internal region of human PLGRKT. AA range:1-50

**Applications:** WB,ELISA

**Recommended Dilutions:** WB: 1/500-1/1000 ELISA: 1/10000

**Host Species:** Rabbit

**Clonality:** Rabbit Polyclonal

**Clone ID:** -

**MW:** Calculated MW: 17 kDa; Observed MW: 17 kDa

**Isotype:** IgG

**Purification:** Affinity Purified

**Species Reactivity:** Human,Rat

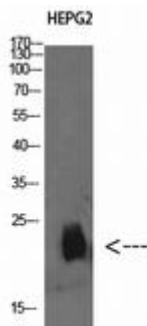
**Conjugation:** Unconjugated

**Modification:** Unmodified

**Constituents:** PBS (without Mg<sup>2+</sup> and Ca<sup>2+</sup>), pH 7.3 containing 50% glycerol, 0.5% BSA and 0.02% sodium azide

**Research Areas:** -

**Storage & Shipping:** Store at -20°C. Avoid repeated freezing and thawing



Western blot analysis of Plasminogen Receptor in HEPG2 lysates using Plasminogen Receptor antibody.



# Product Description

Pioneering GTPase and Oncogene Product Development since 2010

---