

PLASTIN L RABBIT PAB

Cat.#: N226054

Product Name: Anti-Plastin L Rabbit pAb

Synonyms: CP64; L plastin; LC64P; LCPI; LPL; Lplastin; Plastin 2; PLS2

UNIPROT ID: P13796

Background: Actin-binding protein. Plays a role in the activation of T-cells in response to costimulation through TCR/CD3 and CD2 or CD28. Modulates the cell surface expression of IL2RA/CD25 and CD69.

Immunogen: A synthetic peptide of human Plastin L

Applications: WB,IHC-F,IHC-P,ICC/IF,FC,IP

Recommended Dilutions: WB: 1/500-1/1000 IHC: 1/50-1/100 IF: 1/50-1/200 IP: 1/20 FC: 1/50-1/100

Host Species: Rabbit

Clonality: Rabbit Polyclonal

Clone ID: -

MW: Calculated MW: 70 kDa; Observed MW: 70 kDa

Isotype: IgG

Purification: Affinity Purified

Species Reactivity: Human

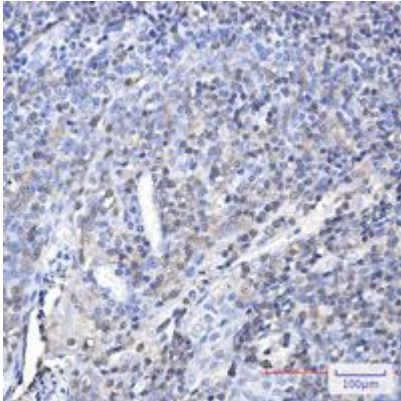
Conjugation: Unconjugated

Modification: Unmodified

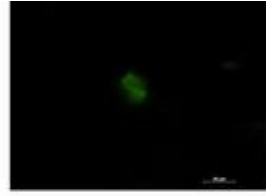
Constituents: PBS (without Mg²⁺ and Ca²⁺), pH 7.3 containing 50% glycerol, 0.5% BSA and 0.02% sodium azide

Research Areas: Signal Transduction

Storage & Shipping: Store at -20°C. Avoid repeated freezing and thawing



Immunohistochemistry analysis of paraffin-embedded Human tonsil using Plastin L antibody. High-pressure and temperature Sodium Citrate pH 6.0 was used for antigen retrieval.



Immunocytochemistry analysis of Plastin L (green) in Jurkat using Plastin L antibody, and DAPI (blue).