

## PLCL2 RABBIT PAB

**Cat.#:** S218939

**Product Name:** Anti-PLCL2 Rabbit Polyclonal Antibody

**Synonyms:** PLCE2

**UNIPROT ID:** Q9UPR0 (Gene Accession - BC036392 )

**Background:** May play a role in the regulation of Ins(1,4,5)P3 around the endoplasmic reticulum.

**Immunogen:** Fusion protein of human PLCL2

**Applications:** ELISA, IHC

**Recommended Dilutions:** IHC: 25-100; ELISA: 5000-10000

**Host Species:** Rabbit

**Clonality:** Rabbit Polyclonal

**Isotype:** Immunogen-specific rabbit IgG

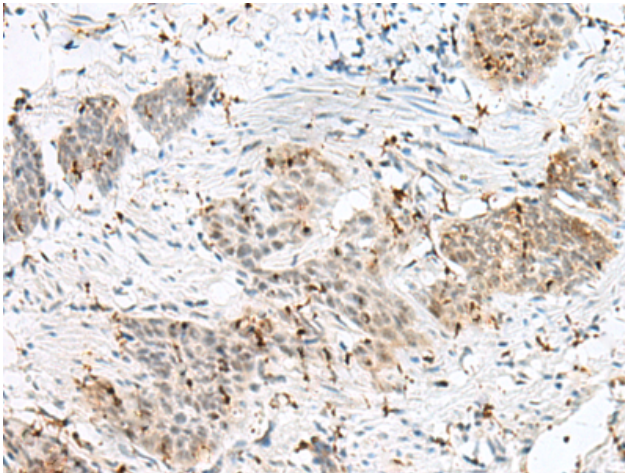
**Purification:** Antigen affinity purification

**Species Reactivity:** Human, Mouse

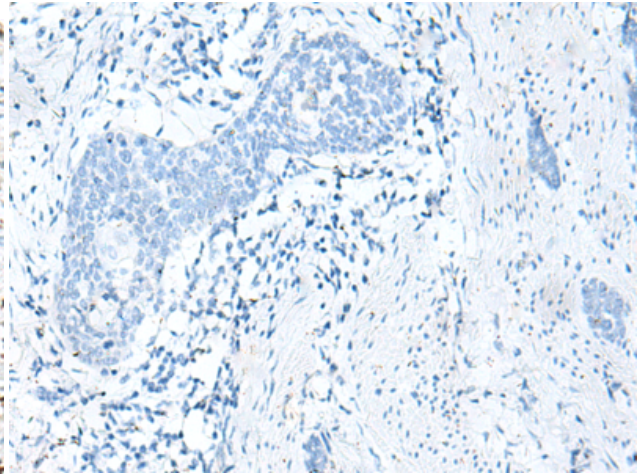
**Constituents:** PBS (without Mg<sup>2+</sup> and Ca<sup>2+</sup>), pH 7.4, 150 mM NaCl, 0.05% Sodium Azide and 40% glycerol

**Research Areas:** Signal Transduction

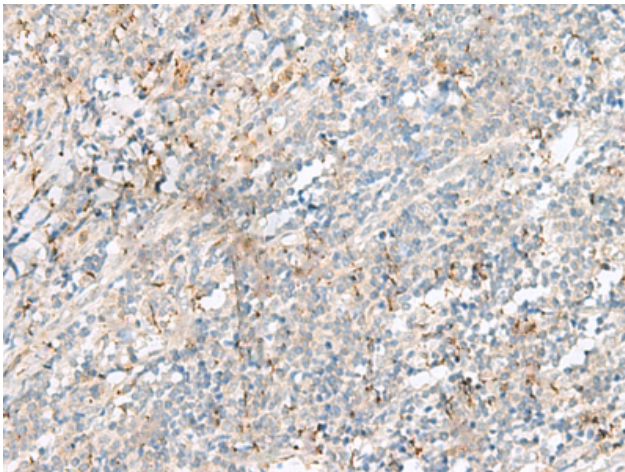
**Storage & Shipping:** Store at -20°C. Avoid repeated freezing and thawing



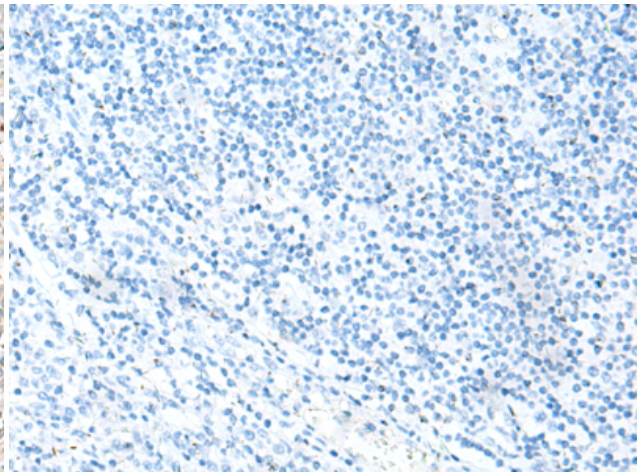
Immunohistochemistry analysis of paraffin embedded Human esophagus cancer tissue using 218939(PLCL2 Antibody) at a dilution of 1/50(Nucleus or Cytoplasm).



In comparison with the IHC on the left, the same paraffin-embedded Human esophagus cancer tissue is first treated with the fusion protein and then with 218939(Anti-PLCL2 Antibody) at dilution 1/50.



The image on the left is immunohistochemistry of paraffin-embedded Human tonsil tissue using 218939(Anti-PLCL2 Antibody) at a dilution of 1/50.



In comparison with the IHC on the left, the same paraffin-embedded Human tonsil tissue is first treated with fusion protein and then with D225544(Anti-PLCL2 Antibody) at dilution 1/50.