

PLCZ1 RABBIT PAB

Cat.#: S217698

Product Name: Anti-PLCZ1 Rabbit Polyclonal Antibody

Synonyms: PLCzeta; NYD-SP27; PLC-zeta-1

UNIPROT ID: Q86YW0 (Gene Accession - BC125067)

Background: The protein encoded by this gene is a member of the phosphoinositide-specific phospholipase C family. Members in this family, classified into six isotypes that are tissue- and organ-specific, hydrolyze phosphatidylinositol 4,5-bisphosphate just before the phosphate group to yield diacylglycerol and inositol 1,4,5-trisphosphate. This protein localizes to the acrosome in spermatozoa and elicits Ca(2+) oscillations and egg activation during fertilization that leads to early embryonic development. Alternative splicing results in multiple transcript variants.

Immunogen: Fusion protein of human PLCZ1

Applications: ELISA, IHC

Recommended Dilutions: IHC: 25-100; ELISA: 1000-2000

Host Species: Rabbit

Clonality: Rabbit Polyclonal

Isotype: Immunogen-specific rabbit IgG

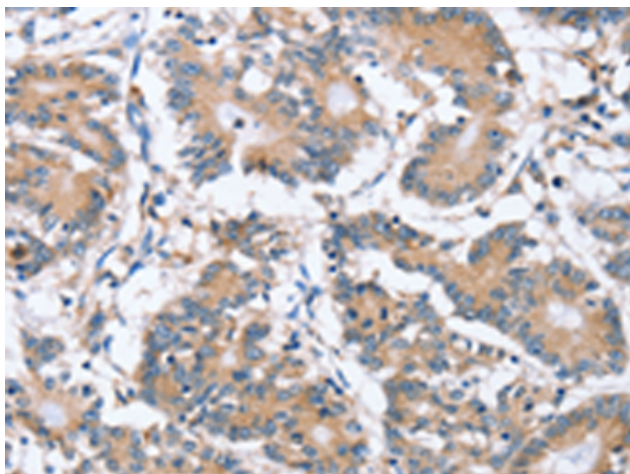
Purification: Antigen affinity purification

Species Reactivity: Human

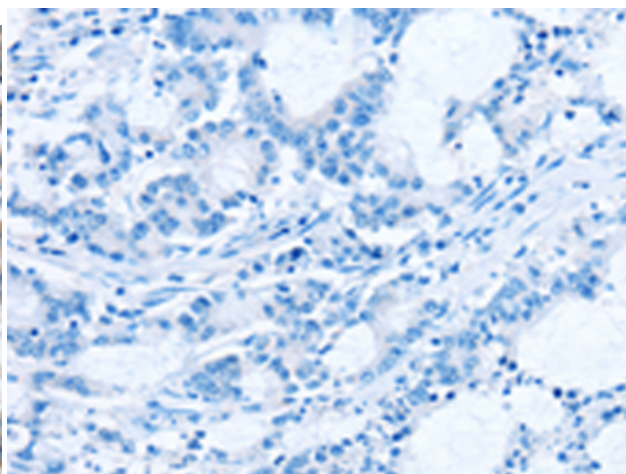
Constituents: PBS (without Mg²⁺ and Ca²⁺), pH 7.4, 150 mM NaCl, 0.05% Sodium Azide and 40% glycerol

Research Areas: Cancer, Metabolism

Storage & Shipping: Store at -20°C. Avoid repeated freezing and thawing



Immunohistochemistry analysis of paraffin embedded Human colon cancer tissue using 217698(PLCZ1 Antibody) at a dilution of 1/20(Cytoplasm).



In comparison with the IHC on the left, the same paraffin-embedded Human colon cancer tissue is first treated with the fusion protein and then with 217698(Anti-PLCZ1 Antibody) at dilution 1/20.