

PLD4 RABBIT PAB

Cat.#: N225243

Product Name: Anti-PLD4 Rabbit pAb

Synonyms: Phospholipase D4 (PLD 4; EC 3.1.4.4; Choline phosphatase 4; Phosphatidylcholine-hydrolyzing phospholipase D4)

UNIPROT ID: Q96BZ4

Background: 5'→3' DNA exonuclease which digests single-stranded DNA (ssDNA).

Immunogen: Synthesized peptide derived from human PLD4 Polyclonal

Applications: WB,ELISA

Recommended Dilutions: WB: 1/500-1/1000 ELISA: 1/10000

Host Species: Rabbit

Clonality: Rabbit Polyclonal

Clone ID: -

MW: Calculated MW: 56 kDa; Observed MW: 56 kDa

Isotype: IgG

Purification: Affinity Purified

Species Reactivity: Human,Mouse,Rat

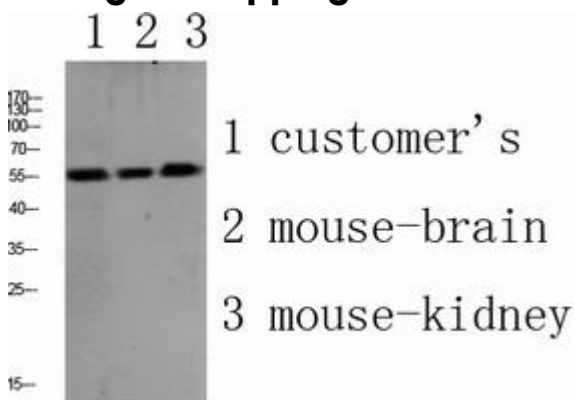
Conjugation: Unconjugated

Modification: Unmodified

Constituents: PBS (without Mg²⁺ and Ca²⁺), pH 7.3 containing 50% glycerol, 0.5% BSA and 0.02% sodium azide

Research Areas: Cardiovascular

Storage & Shipping: Store at -20°C. Avoid repeated freezing and thawing



Western blot analysis of PLD4 in various lysates using PLD4 antibody.



Product Description

Pioneering GTPase and Oncogene Product Development since 2010
