

## PLEKHA1 RABBIT MAB

**Cat.#:** N262970

**Product Name:** Anti-PLEKHA1 Rabbit Monoclonal Antibody

**Synonyms:** PH domain-containing family A member 1

**UNIPROT ID:** Q9HB21

**Background:** Binds specifically to phosphatidylinositol 3,4-diphosphate (PtdIns3,4P2), but not to other phosphoinositides. May recruit other proteins to the plasma membrane.

**Immunogen:** A synthetic peptide of human TAPP-1

**Applications:** WB,IP

**Recommended Dilutions:** WB: 1/500-1/1000 IP: 1/20

**Host Species:** Rabbit

**Clonality:** Rabbit Monoclonal

**Clone ID:** R01-4F5

**MW:** Calculated MW: 46 kDa; Observed MW: 46 kDa

**Isotype:** IgG

**Purification:** Affinity Purified

**Species Reactivity:** Human

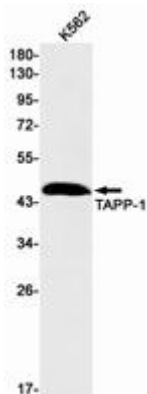
**Conjugation:** Unconjugated

**Modification:** Unmodified

**Constituents:** PBS (without Mg<sup>2+</sup> and Ca<sup>2+</sup>), pH 7.3 containing 50% glycerol, 0.5% BSA and 0.02% sodium azide

**Research Areas:** Signal Transduction

**Storage & Shipping:** Store at -20°C. Avoid repeated freezing and thawing



Western blot analysis of TAPP1 in K562 lysates using PLEKHA1 antibody.



# Product Description

Pioneering GTPase and Oncogene Product Development since 2010

---