

## PLEKHF2 RABBIT PAB

**Cat.#:** S219286

**Product Name:** Anti-PLEKHF2 Rabbit Polyclonal Antibody

**Synonyms:** EAPF; PHAFIN2; ZFYVE18

**UNIPROT ID:** Q9H8W4 (Gene Accession - BC011806 )

**Background:** May play a role in early endosome fusion upstream of RAB5, hence regulating receptor trafficking and fluid-phase transport. Enhances cellular sensitivity to TNF-induced apoptosis (PubMed:18288467).

**Immunogen:** Fusion protein of human PLEKHF2

**Applications:** ELISA, WB, IHC

**Recommended Dilutions:** IHC: 100-300;WB: 1000-5000;ELISA: 5000-10000

**Host Species:** Rabbit

**Clonality:** Rabbit Polyclonal

**Isotype:** Immunogen-specific rabbit IgG

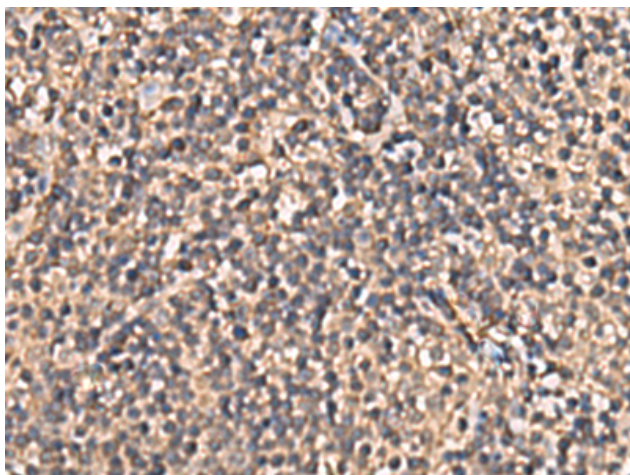
**Purification:** Antigen affinity purification

**Species Reactivity:** Human, Mouse

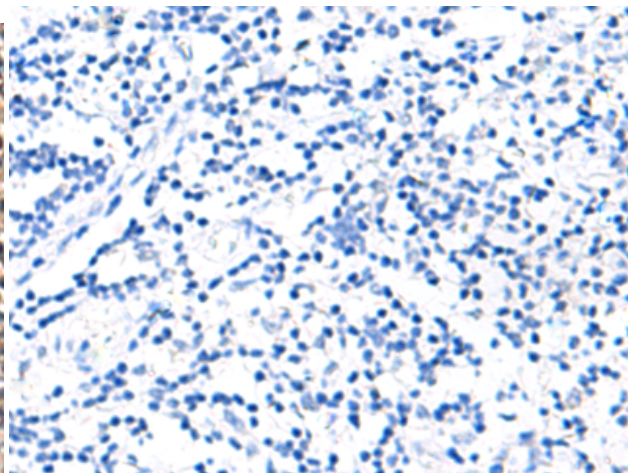
**Constituents:** PBS (without Mg<sup>2+</sup> and Ca<sup>2+</sup>), pH 7.4, 150 mM NaCl, 0.05% Sodium Azide and 40% glycerol

**Research Areas:** Cell Biology

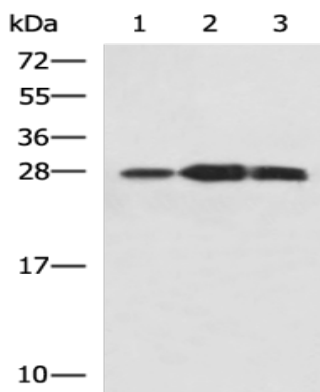
**Storage & Shipping:** Store at -20°C. Avoid repeated freezing and thawing



Immunohistochemistry analysis of paraffin embedded Human tonsil tissue using 219286(PLEKHF2 Antibody) at a dilution of 1/90(Cytoplasm).



In comparison with the IHC on the left, the same paraffin-embedded Human tonsil tissue is first treated with the fusion protein and then with 219286(Anti-PLEKHF2 Antibody) at dilution 1/90.



Gel: 12%SDS-PAGE, Lysate: 40 µg;  
 Lane 1-3: Mouse kidney tissue, Raji and Jurkat cell lysates;  
 Primary antibody: 219286(PLEKHF2 Antibody) at dilution 1/1400;  
 Secondary antibody: HRP-conjugated Goat anti rabbit IgG at 1/5000 dilution;  
 Exposure time: 1 minute