

PLEKHG6 RABBIT PAB

Cat.#: S217624

Product Name: Anti-PLEKHG6 Rabbit Polyclonal Antibody

Synonyms: MyoGEF

UNIPROT ID: Q3KR16 (Gene Accession - BC105961)

Background: PLEKHG6 functions as a guanine nucleotide exchange factor activating the small GTPase RHOA, which, in turn, induces myosin filament formation. It activates RHOA but not activate RAC1, or to a much lower extent than RHOA and RHOA. Part of a functional unit, involving MyoGEF, MYH10 and RHOA, at the cleavage furrow to advance furrow ingression during cytokinesis. In epithelial cells, required for the formation of microvilli and membrane ruffles on the apical pole. Along with EZR, required for normal macropinocytosis.

Immunogen: Fusion protein of human PLEKHG6

Applications: ELISA, WB, IHC

Recommended Dilutions: IHC: 25-100;WB: 500-2000;ELISA: 2000-5000

Host Species: Rabbit

Clonality: Rabbit Polyclonal

Isotype: Immunogen-specific rabbit IgG

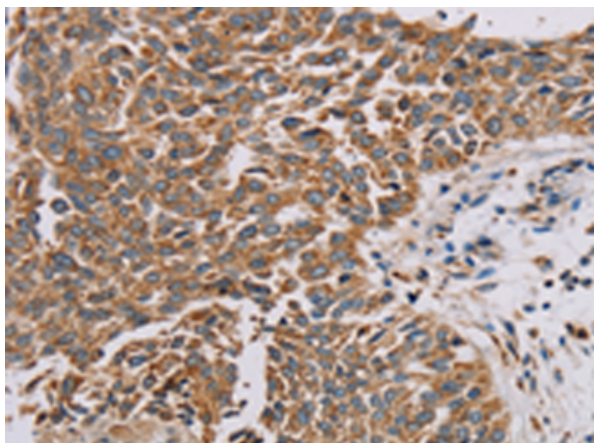
Purification: Antigen affinity purification

Species Reactivity: Human, Mouse

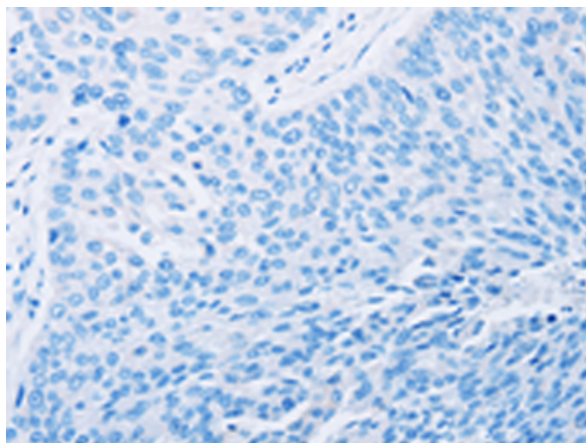
Constituents: PBS (without Mg²⁺ and Ca²⁺), pH 7.4, 150 mM NaCl, 0.05% Sodium Azide and 40% glycerol

Research Areas: Signal Transduction, Cancer

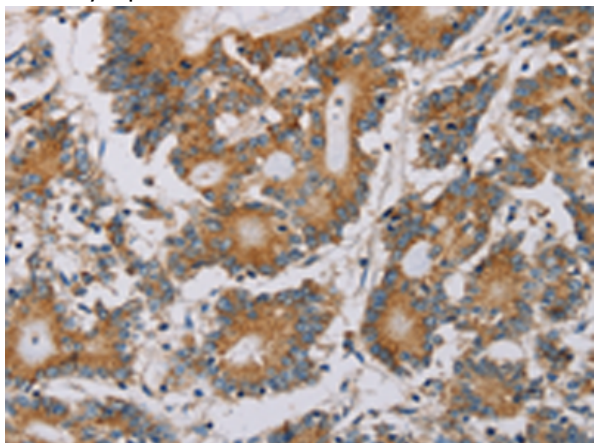
Storage & Shipping: Store at -20°C. Avoid repeated freezing and thawing



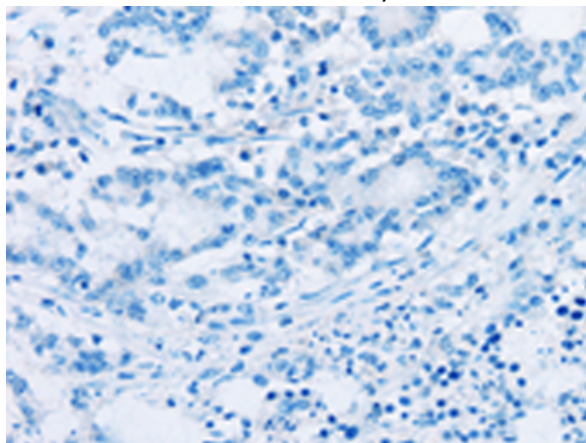
Immunohistochemistry analysis of paraffin embedded Human lung cancer tissue using 217624(PEKKG6 Antibody) at a dilution of 1/20(Cytoplasm).



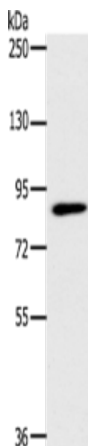
In comparison with the IHC on the left, the same paraffin-embedded Human lung cancer tissue is first treated with the fusion protein and then with 217624(Anti-PEKKG6 Antibody) at dilution 1/20.



The image on the left is immunohistochemistry of paraffin-embedded Human colon cancer tissue using 217624(Anti-PEKKG6 Antibody) at a dilution of 1/20.



In comparison with the IHC on the left, the same paraffin-embedded Human colon cancer tissue is first treated with fusion protein and then with D222720(Anti-PEKKG6 Antibody) at dilution 1/20.



Gel: 6%SDS-PAGE, Lysate: 40 µg;
Lane: 293T cells;
Primary antibody: 217624(PEKKG6 Antibody) at dilution 1/400;
Secondary antibody: Goat anti rabbit IgG at 1/8000 dilution;
Exposure time: 10 seconds



Product Description

Pioneering GTPase and Oncogene Product Development since 2010
