

PLEKHJ1 RABBIT PAB

Cat.#: S219402

Product Name: Anti-PLEKHJ1 Rabbit Polyclonal Antibody

Synonyms: GNRPX

UNIPROT ID: Q9NW61 (Gene Accession - BC003084)

Background: PLEKHJ1 (pleckstrin homology domain containing, family J member 1), also known as GNRPX (guanine nucleotide-releasing protein x), is a 149 amino acid phosphoprotein that contains one PH (pleckstrin homology) domain and is expressed in testis and liver. The gene that encodes PLEKHJ1 maps to human chromosome 19, which consists of approximately 63 million bases and makes up over 2% of human genomic DNA. Chromosome 19 contains the greatest gene density of the human chromosomes and is the genetic home for a number of immunoglobulin superfamily members, including killer cell and leukocyte Ig-like receptors, ICAMs, the CEACAM and PSG families, and Fc α receptors. Key genes for eye color and hair color also map to chromosome 19. Peutz-Jeghers syndrome, spinocerebellar ataxia type 6, the stroke disorder CADASIL, hypercholesterolemia and insulin-dependent diabetes are also linked to chromosome 19.

Immunogen: Fusion protein of human PLEKHJ1

Applications: ELISA, WB, IHC

Recommended Dilutions: IHC: 100-200;WB: 500-2000;ELISA: 5000-10000

Host Species: Rabbit

Clonality: Rabbit Polyclonal

Isotype: Immunogen-specific rabbit IgG

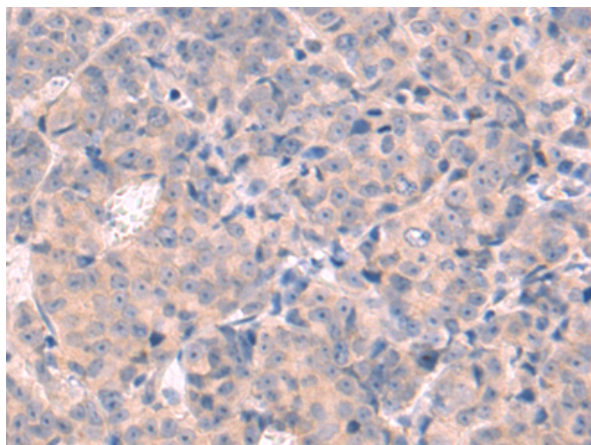
Purification: Antigen affinity purification

Species Reactivity: Human, Mouse, Rat

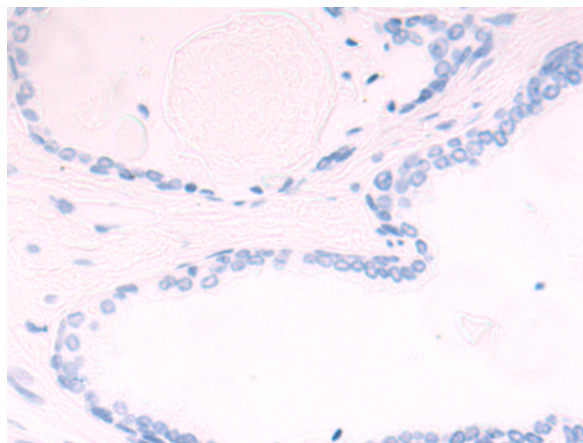
Constituents: PBS (without Mg²⁺ and Ca²⁺), pH 7.4, 150 mM NaCl, 0.05% Sodium Azide and 40% glycerol

Research Areas: Signal Transduction, Cell Biology

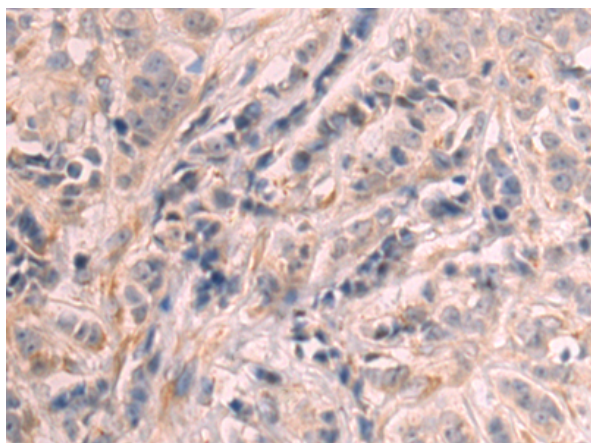
Storage & Shipping: Store at -20°C. Avoid repeated freezing and thawing



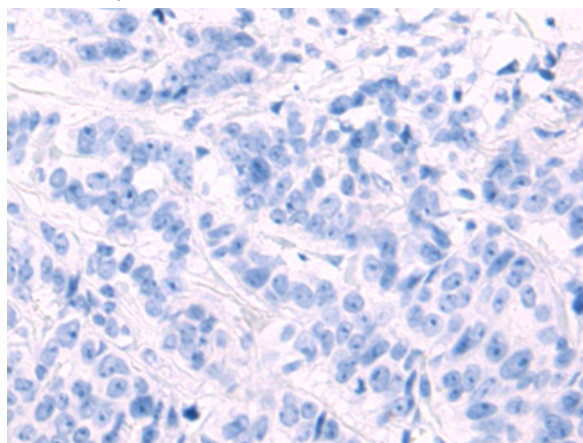
Immunohistochemistry analysis of paraffin embedded Human prostate cancer tissue using 219402(PLEKHJ1 Antibody) at a dilution of 1/90(Cytoplasm).



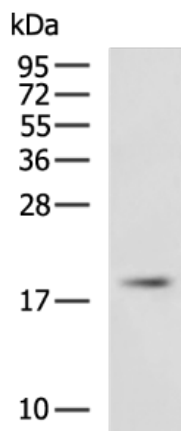
In comparison with the IHC on the left, the same paraffin-embedded Human prostate cancer tissue is first treated with the fusion protein and then with 219402(Anti-PLEKHJ1 Antibody) at dilution 1/90.



The image on the left is immunohistochemistry of paraffin-embedded Human breast cancer tissue using 219402(Anti-PLEKHJ1 Antibody) at a dilution of 1/90.



In comparison with the IHC on the left, the same paraffin-embedded Human breast cancer tissue is first treated with fusion protein and then with D226776(Anti-PLEKHJ1 Antibody) at dilution 1/90.



Gel: 12%SDS-PAGE, Lysate: 40 µg;
Lane: Rat skeletal muscle tissue lysate;
Primary antibody: 219402(PLEKHJ1 Antibody) at dilution 1/1000;
Secondary antibody: HRP-conjugated Goat anti rabbit IgG at 1/5000 dilution;
Exposure time: 10 seconds



Product Description

Pioneering GTPase and Oncogene Product Development since 2010
