

PLEKHO1 RABBIT PAB

Cat.#: S213436

Product Name: Anti-PLEKHO1 Rabbit Polyclonal Antibody

Synonyms: OC120; CKIP-1

UNIPROT ID: Q53GL0 (Gene Accession - NP_057358.2)

Background: Pleckstrin homology domain-containing family O member 1 is a protein that in humans is encoded by the PLEKHO1 gene. PLEKHO1 has been shown to interact with Casein kinase 2, alpha 1 and SMURF1. It plays a role in the regulation of the actin cytoskeleton through its interactions with actin capping protein (CP). Appears to target ATM to the plasma membrane, and also inhibit tumor cell growth by inhibiting AKT-mediated cell-survival. The protein implicated in PI3K-regulated muscle differentiation, the regulation of AP-1 activity (plasma membrane bound AP-1 regulator that translocates to the nucleus) and the promotion of apoptosis induced by tumor necrosis factor TNF. When bound to PKB, it inhibits it probably by decreasing PKB level of phosphorylation.

Immunogen: Synthetic peptide of human PLEKHO1

Applications: ELISA, IHC

Recommended Dilutions: IHC: 25-100; ELISA: 1000-5000

Host Species: Rabbit

Clonality: Rabbit Polyclonal

Isotype: Immunogen-specific rabbit IgG

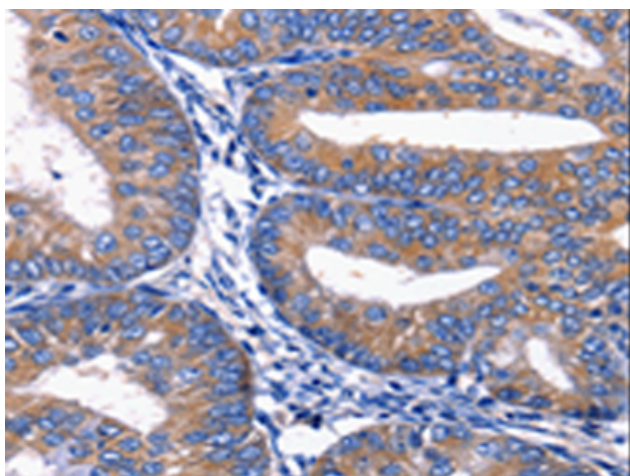
Purification: Antigen affinity purification

Species Reactivity: Human, Mouse, Rat

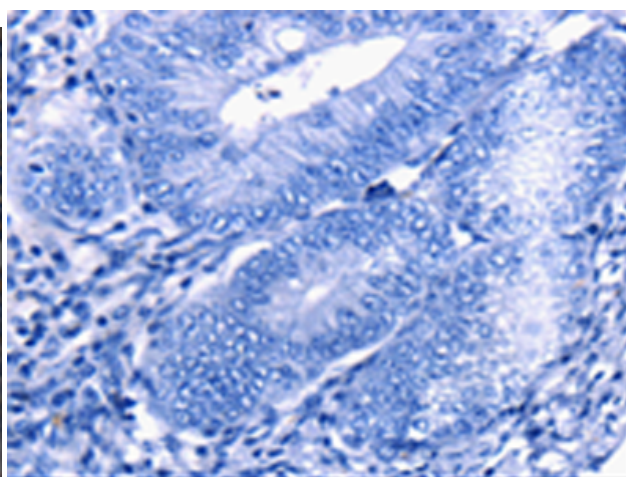
Constituents: PBS (without Mg²⁺ and Ca²⁺), pH 7.4, 150 mM NaCl, 0.05% Sodium Azide and 40% glycerol

Research Areas: Signal Transduction

Storage & Shipping: Store at -20°C. Avoid repeated freezing and thawing



Immunohistochemistry analysis of paraffin embedded Human cervical cancer tissue using 213436 (PLEKHO1 Antibody) at a dilution of 1/20 (Cytoplasm).



In comparison with the IHC on the left, the same paraffin-embedded Human cervical cancer tissue is first treated with the synthetic peptide and then with 213436 (Anti-PLEKHO1 Antibody) at dilution 1/20.



Product Description

Pioneering GTPase and Oncogene Product Development since 2010
