

## PLGLB2 RABBIT PAB

**Cat.#:** S218790

**Product Name:** Anti-PLGLB2 Rabbit Polyclonal Antibody

**Synonyms:** PLGP1

**UNIPROT ID:** Q02325 (Gene Accession - BC005379 )

**Background:** Cleavage of the serine proteinase plasminogen to form plasmin is the central event in the dissolution of blood clots by the fibrinolytic system. Within the fibrinolytic cascade, the serine proteinases urokinase-type plasminogen activator (uPA) and tissue-type plasminogen activator (tPA) activate the proenzyme plasminogen by cleaving plasminogen to form the fibrinolytically active enzyme plasmin. PLGLB2 (plasminogen-like B2), also known as PLGP1, is a 96 amino acid protein that resembles the N-terminal plasminogen activation peptide, which is released from plasminogen during conversion to plasmin. PLGLB2 may bind to lysine binding sites present in the kringle structures of plasminogen, an event that interferes with the binding of fibrin or  $\alpha$ -2 antiplasmin to plasminogen and may result in the localization of activity at sites necessary for extracellular matrix destruction.

**Immunogen:** Fusion protein of human PLGLB2

**Applications:** ELISA, IHC

**Recommended Dilutions:** IHC: 50-300; ELISA: 5000-10000

**Host Species:** Rabbit

**Clonality:** Rabbit Polyclonal

**Isotype:** Immunogen-specific rabbit IgG

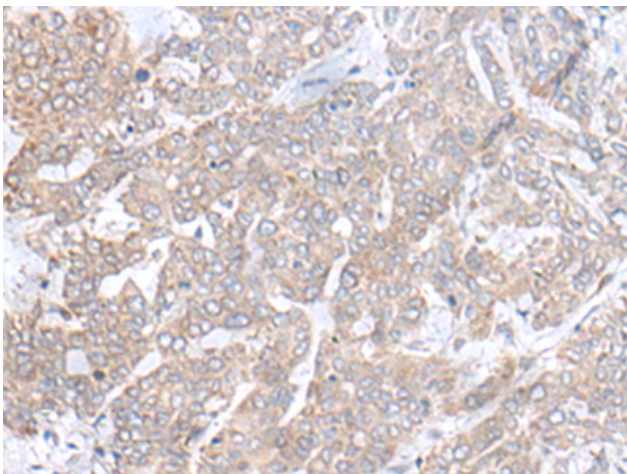
**Purification:** Antigen affinity purification

**Species Reactivity:** Human

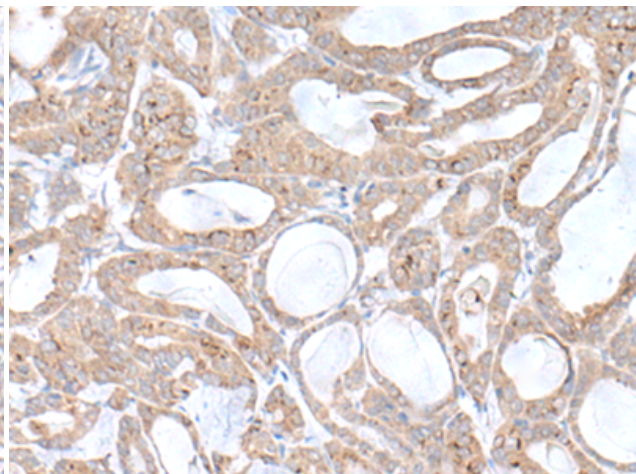
**Constituents:** PBS (without Mg<sup>2+</sup> and Ca<sup>2+</sup>), pH 7.4, 150 mM NaCl, 0.05% Sodium Azide and 40% glycerol

**Research Areas:** Signal Transduction, Immunology

**Storage & Shipping:** Store at -20°C. Avoid repeated freezing and thawing



Immunohistochemistry analysis of paraffin-embedded Human liver cancer tissue using 218790(PLGLB2 Antibody) at a dilution of 1/65(Secreted).



Immunohistochemistry analysis of paraffin-embedded Human thyroid cancer tissue using 218790(Anti-PLGLB2 Antibody) at a dilution of 1/65.



# Product Description

Pioneering GTPase and Oncogene Product Development since 2010

---