

PLIN1 RABBIT PAB

Cat.#: S220797

Product Name: Anti-PLIN1 Rabbit Polyclonal Antibody

Synonyms: PERI; PLIN; FPLD4

UNIPROT ID: O60240 (Gene Accession - NP_002657)

Background: The protein encoded by this gene coats lipid storage droplets in adipocytes, thereby protecting them until they can be broken down by hormone-sensitive lipase. The encoded protein is the major cAMP-dependent protein kinase substrate in adipocytes and, when unphosphorylated, may play a role in the inhibition of lipolysis. Alternatively spliced transcript variants varying in the 5' UTR, but encoding the same protein, have been found for this gene.

Immunogen: Synthetic peptide of human PLIN1

Applications: ELISA, IHC

Recommended Dilutions: IHC: 25-100; ELISA: 1000-2000

Host Species: Rabbit

Clonality: Rabbit Polyclonal

Isotype: Immunogen-specific rabbit IgG

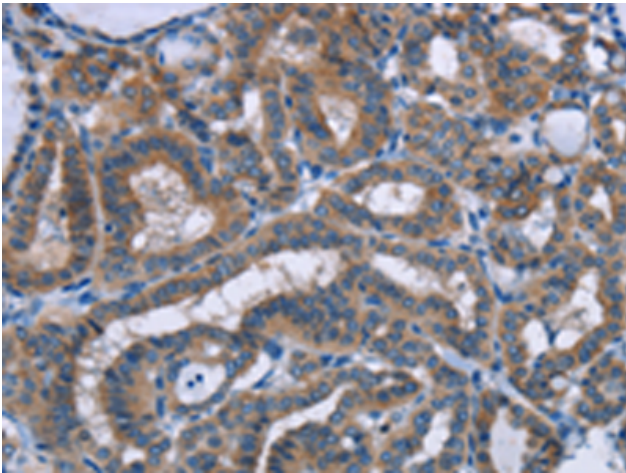
Purification: Antigen affinity purification

Species Reactivity: Human, Mouse, Rat

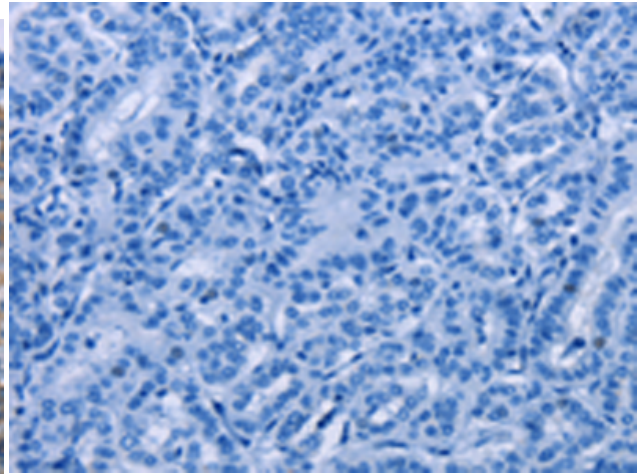
Constituents: PBS (without Mg²⁺ and Ca²⁺), pH 7.4, 150 mM NaCl, 0.05% Sodium Azide and 40% glycerol

Research Areas: Metabolism, Cancer, Cardiovascular

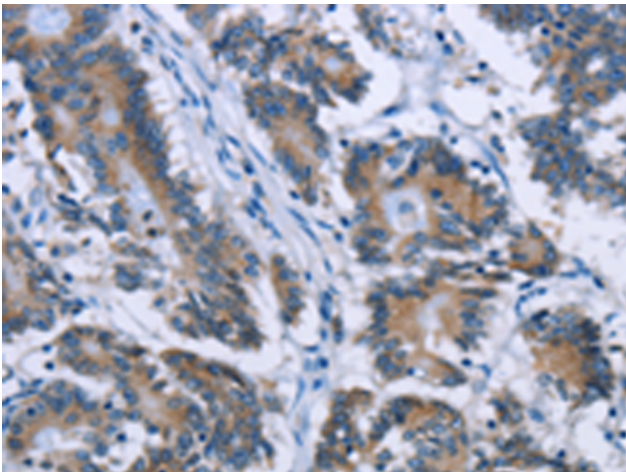
Storage & Shipping: Store at -20°C. Avoid repeated freezing and thawing



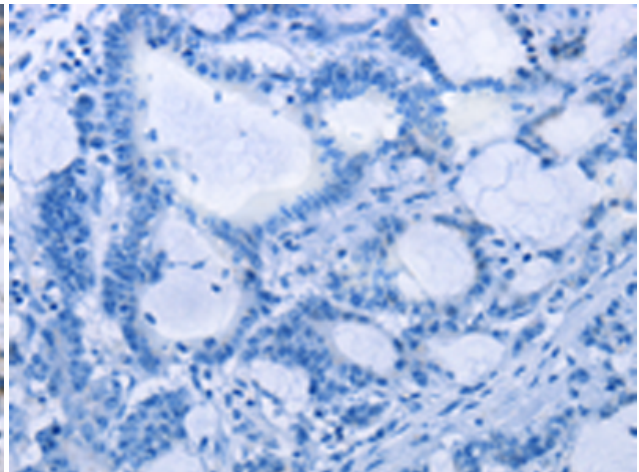
Immunohistochemistry analysis of paraffin embedded Human thyroid cancer tissue using 220797 (PLINI Antibody) at a dilution of 1/30 (Cytoplasm).



In comparison with the IHC on the left, the same paraffin-embedded Human thyroid cancer tissue is first treated with the synthetic peptide and then with 220797 (Anti-PLINI Antibody) at dilution 1/30.



The image on the left is immunohistochemistry of paraffin-embedded Human colon cancer tissue using 220797 (Anti-PLINI Antibody) at a dilution of 1/30.



In comparison with the IHC on the left, the same paraffin-embedded Human colon cancer tissue is first treated with synthetic peptide and then with D262037 (Anti-PLINI Antibody) at dilution 1/30.